

WATER TRANSFER WORKING GROUP PROJECT DESCRIPTION

APPLICATION NO./COURT CLAIM NO. CS4-84623-J (YAKI-20-03)		
APPLICANT NAME Yakima Greenway Foundation	CONTACT Kellie Connaughton	CONTACT'S TELEPHONE NO 509-453-8280
WATER RIGHT HOLDER'S NAME (if different) Naches Cowiche Canal Association		CONTACT'S EMAIL kellie@yakimagreenway.org

DATE OF APPLICATION February 3, 2020	PRIORITY DATE June 30, 1878
---	--------------------------------

WATER SOURCE: Naches River and 2 Wells (S1 and S2) at Yakima Arboretum	CROP: Residential, commercial, and agricultural irrigation
<p>INSTANTANEOUS QUANTITY: 13.40 cfs from April 1 through September 30 12.08 cfs from October 1 through October 31</p> <p>Allowed at Arboretum wells S1 and S2 with reductions at the Naches River diversion: 0.68 cfs from April 1 through August 31 0.45 cfs from September 1 through September 30 0.34 cfs from October 1 through October 31</p> <p>Proposed @ Sherman Park: Increase withdrawals from Well S2 to: 1 cfs from April 1 through August 31 0.66 cfs from September 1 through September 30 0.5 cfs from October 1 through October 31</p>	<p>ANNUAL QUANTITY: 5,263 acre-ft/yr</p> <p>Arboretum: 188.4 ac-ft/yr (non-additive)</p> <p>Proposed @ Sherman Park: 88.2 ac-ft/yr (non-additive)</p> <p>Proposed total from Well 2: 276.9 ac-ft/yr (non-additive)</p>
<p>PERIOD OF USE: April 1 through October 31</p>	
<p>PLACE OF USE: OU 23 as amended in the written description of Old Union's place of use. The place of use is identified on OU 24, OU 25, COY 15E-1, COY 15L-1, COY 15M-1 and COY 15A-1.</p>	<p>PURPOSE OF USE: Irrigation of 566.4 acres of residential, commercial, and agricultural land.</p> <p>Arboretum: 16 acres of irrigation (non-additive).</p> <p>Proposed @ Sherman Park: 7.5 acres of irrigation (non-additive)</p> <p>Proposed total from Well S2: 23.5 acres of irrigation (non-additive)</p>
<p>IRRIGATION METHOD: Varies</p>	

CONSUMPTIVE USE CALCULATION:

This change allows up to an additional 0.32 cfs for withdrawal from wells at Sherman Park and the Yakima Arboretum. No change in consumptive use is anticipated from this change.

NARRATIVE DESCRIPTION OF PROJECT:

On March 18, 2022, the Yakima County Water Conservancy Board granted conditional approval of this change, YAKI-20-03. Ecology's 45-day review period ends on May 5, 2022.

The Yakima Greenway Foundation ("Greenway") has been authorized to irrigate 12.2 acres under a temporary permit, G4-29825T, from Well S2. The Greenway bought 12.2 acres of shares from the Naches Cowiche Irrigation Association and is proposing to transfer an additional 7.5 acres of shares of irrigation to Well S2 to cover the water use at Sherman Park. The Greenway will then cancel the temporary permit G4-29825T. The Greenway has been using the proposed quantities of water from Well S2 since 1988. Including the quantities transferred from the Old Union Irrigation Company in 2016 under [CS4-01212CTCL](#) to the Arboretum, the total amount allowed from Wells S1 and S2 will be up to 1 cfs, 276.9 ac-ft/yr for irrigation of 23.5 acres. The Arboretum also has a groundwater certificate G4-23039C which allows withdrawal from Wells S1 and S2 up to 118 gpm, 83 ac-ft/yr for seasonal municipal water supply (see [CG4-23039C@1](#) Modification and [YAKI-10-03](#) ROE).

For more information, see the Board's documentation for YAKI-20-03:

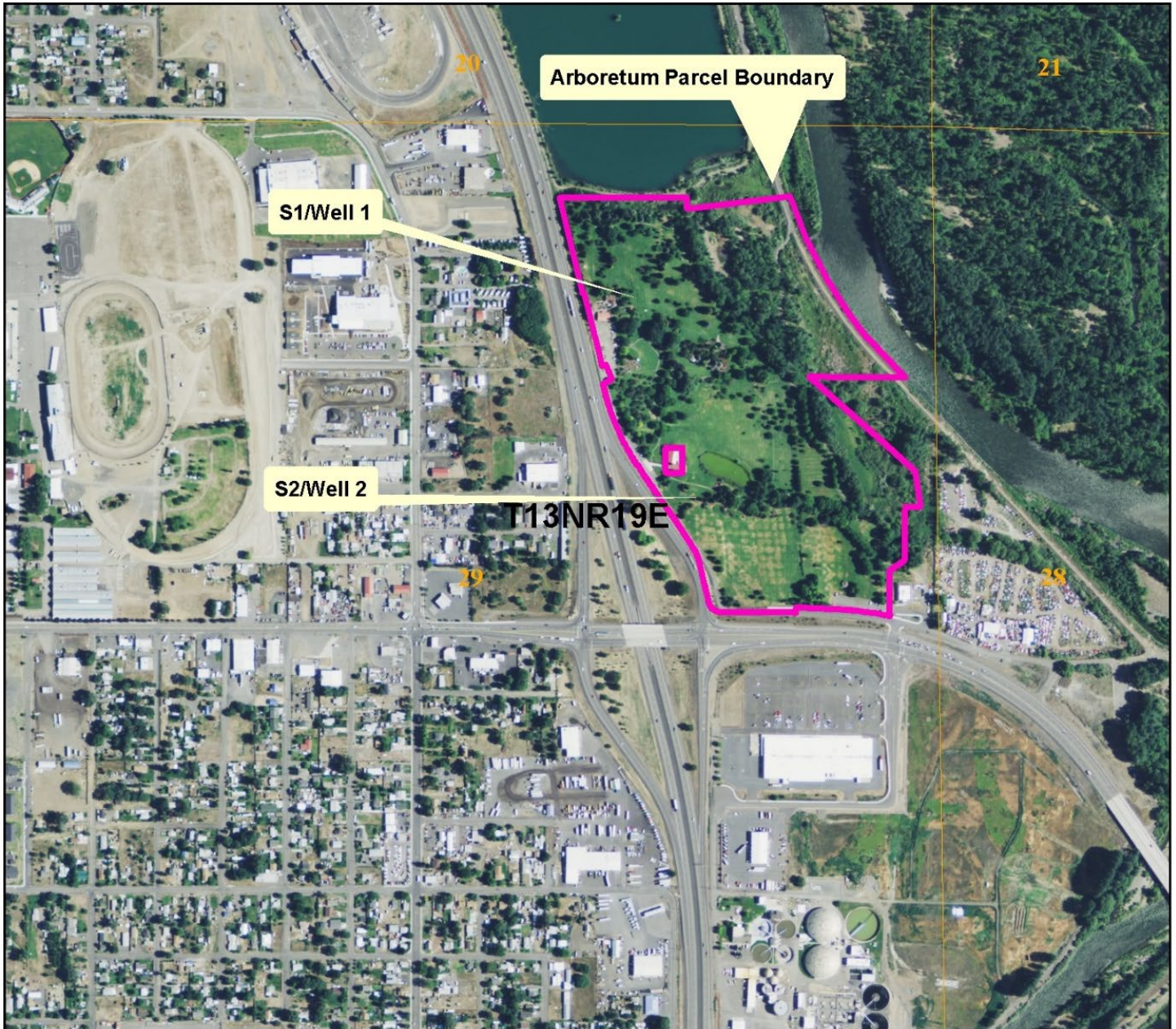
- [Application](#).
- [Application Supporting Documents #1](#).
- [Application Supporting Documents #2](#).
- [Report of Examination](#).
- [ROE Supporting Documents](#), including a 2014 Technical Memorandum by Anna Hoselton analyzing the addition of Wells S1 and S2 under CS4-01212CTCL (pages 87-104).

Also see maps of the project area from the Ecology 2016 below the Monthly Schedule table from YAKI-20-03.

Monthly Schedule, Adapted from 2016 ROE, Page 14, with New Greenway Authorization in Italics

Month	Old Union Max. Diversion	Qty. for Diversion from Naches River at Nelson-Cowiche Dam (CFS)	Qty. approved from groundwater at Arboretum (CFS)	<i>Greenway. Quantity (CFS)</i>	Total Authorized Withdrawal from Well S2 (CFS) and [gpm]
April	13.4	12.72	0.68	<i>0.32</i>	1.00 [448.8 gpm]
May	13.4	12.52	0.68	<i>0.32</i>	1.00 [448.8 gpm]
June	13.4	12.52	0.68	<i>0.32</i>	1.00 [448.8 gpm]
July	13.4	12.52	0.68	<i>0.32</i>	1.00 [448.8 gpm]
August	13.4	12.52	0.68	<i>0.32</i>	1.00 [448.8 gpm]
September	13.4	12.75	0.45	<i>0.21</i>	0.66 [296.2 gpm]
October	13.4	13.06	0.34	<i>0.16</i>	0.5 [224.4 gpm]
Acres of Irrigation		542.90	16	7.5	23.50
Acre-feet/year	5263	4986.1	188.4	<i>88.2</i>	276.9

Old Union/Yakima Arboretum Well Locations






0 360 720 1,440 2,160 2,880 Feet



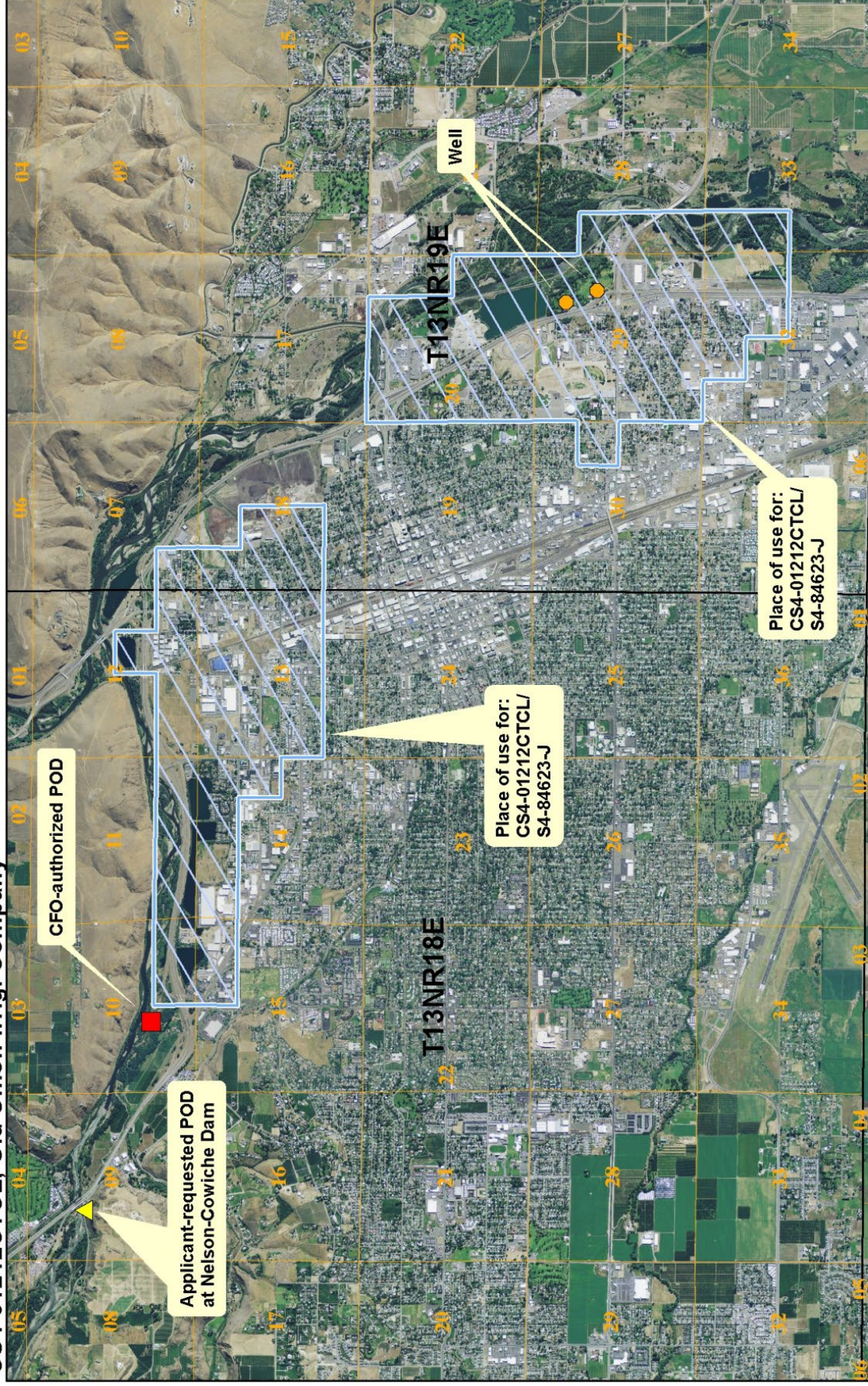
Map Date: 1/22/2016



Legend

-  Applicant-requested POW/Well
-  Arboretum Parcel Boundary
-  Sections

CS4-01212CTCL, Old Union Irrig. Company



Legend

- Applicant-requested Surface Diversion
- CFO-authorized Surface Diversion
- Applicant-requested Well
- Place of use
- Townships
- Sections



Map Date: 8/19/2015