

**WATER TRANSFER WORKING GROUP PROJECT DESCRIPTION**

APPLICATION NO. Water Right Application No. G4-35992 with mitigation from Trust Water Right No. S4-83047-J (which originally diverted from Big Creek)		
APPLICANT NAME Granite Creek Ranches LLC	CONTACT Tyson Carlson	CONTACT'S TELEPHONE NO 509-895-5923
WATER RIGHT HOLDER'S NAME (if different) Big Creek Water Right LLC/Pat Deneen		CONTACT'S EMAIL tcarlson@aspectconsulting.com

DATE OF APPLICATION March 16, 2018
---------------------------------------

WATER SOURCE: Well (BAN-899)	CROP: No outdoor irrigation
INSTANTANEOUS QUANTITY: 20 gpm	ANNUAL QUANTITY: 3.7 ac-ft/yr
PERIOD OF USE: Continuous	
PLACE OF USE: Parcel No. 832534, located within the W $\frac{1}{2}$ SE $\frac{1}{4}$ of Section 12, T. 20 N., R. 14 E.W.M.	PURPOSE OF USE: Multiple Domestic Supply for 12 homes

CONSUMPTIVE USE CALCULATION: <b>Indoor Use:</b> 12 residential connection at 275 gallons per day (gpd) used continuously year round equates to 3.696 ac-ft/yr of water use, or: Consistent with WAC 173-539A-050(3), 30% of domestic in-house use on a septic system is consumptively used, therefore: <b>indoor consumptive use (CU) = 1.109 ac-ft/yr.</b> <b>Exchange Contract Water = 0.641 ac-ft/yr for the period September 2 to March 31</b>
----------------------------------------------------------------------------------------------------------------------------------------------------------------------------------------------------------------------------------------------------------------------------------------------------------------------------------------------------------------------------------------------------------------------------------------------------------

NARRATIVE DESCRIPTION OF PROJECT: <p>This project is in the Peterson/Fowler creek basin and will only allow indoor water use for up to 12 residences. The applicant has proposed to mitigate for inbasin impacts by trucking water in from outside the basin and discharging it from a cistern attached to the drain field. The amount of water being discharged from the cistern will be equal to the amount of water consumptively used under the permit, which at this time is 30% of the water withdrawn from the well. The water being trucked in to mitigate for this new use will be delivered by Evergreen Valley Water System, which withdraws water under Change Authorization No. CG3-21798C@1. The point of withdrawal, discharge from the cistern, and the affluent from the residences, will be metered and reported to Ecology.</p>
-------------------------------------------------------------------------------------------------------------------------------------------------------------------------------------------------------------------------------------------------------------------------------------------------------------------------------------------------------------------------------------------------------------------------------------------------------------------------------------------------------------------------------------------------------------------------------------------------------------------------------------------------------------------------------------------------------------------------------------------------------------------------------------------------------------------------------------------------------

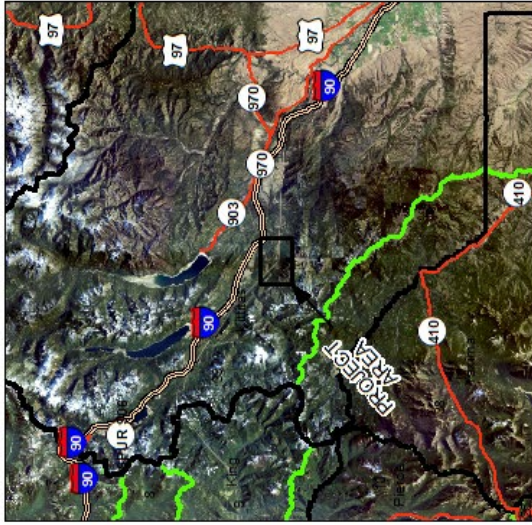
Additionally, the applicant is also proposing to mitigate for impacts to the Yakima River by using a portion of Trust Water Right No. S4-83047-J, which was originally diverted from Big Creek.

With the proposed mitigation, Ecology believes that this new use will not impair any existing rights.

**Map of G4-35992**

**ATTACHMENT 1**

Granite Creek Ranches LLC  
 Water Right Application No. G4-35992  
 Section 3, T. 19 N., R. 14 E. W.M., Kittitas County  
 WRIA 39 - Upper Yakima



Comment:  
 Place of use and source locations are as defined within the Report of Examination cover sheet for the document identified in the header above.