

## Kittitas County Water bank

### **Over-the-Counter Water Budget Neutral Program Proposal- Amendment 2018**

---

\*\*This is the same proposal as the last WTWG meeting on January 7th, except some sections have been proposed to be removed for further study at this time following consultation with Tom Ring and Jon Kohr on January 24th in a meeting with Kittitas County and Ecology. The sections that are still being asked for OTC approval are highlighted below, overlain with areas where Kittitas County already has permit approval. See the attached maps for approved sections and more information. \*\* Kittitas County has operated a publicly owned water bank since December 2, 2015. Prior to implementation, Kittitas County requested and was granted approval to issue mitigation certificates in all of the “green” areas served County’s water bank for permit-exempt uses (water budget neutral).

Over the last few years, the County has been authorized to issue mitigation certificates through the County’s Over the Counter (OTC) program to permitted uses in the “green” zones of the County water bank as well as some “yellow” areas in the Upper County through multiple permits.

In an effort to gain program consistency, Kittitas County would like to request authorization to issue mitigation certificates to permit- exempt uses through the OTC program within all of the authorized places of use in permitted areas. Staff is not requesting any additional parcel authorizations or other changes to the original proposal.

The Kittitas County Water Resources program will continue to monitor and report all mitigation certificate activity and present biannually to the Water Transfer Working Group.

Kittitas County Permitted Places of Use:

#### **G4-35799(A): Mainstem Yakima River Valley Sediment Aquifer**

Portions of Sections 1-3 and 11-13, T. 20 N., R. 13 E.W.M.;  
Sections 17-23, 23-29, and 34-36, T. 20 N., R. 14 E.W.M.;  
Sections 1 and 2, T. 19 N., R. 14 E.W.M.;  
Sections 25-28 and 31-36, T. 20 N., R. 15 E.W.M.;  
Sections 1-6, T. 19 N., R. 15 E.W.M.;  
Sections 28-33, T. 20 N., R. 16 E.W.M.;  
Sections 2-6, 8-11, 13-14, and 24, T. 19 N., R. 16 E.W.M.; and  
Sections 19 and 20, T. 19 N., R. 17 E.W.M.

#### **G4-35799(D):**

Portions of Sections 1-4, 11-12 in T. 16 N., R. 19 E.W.M.  
Portions of Sections 3-10, 14-18, 21-23 in T. 16 N., R. 20 E.W.M.  
Portions of Section 1, 12 in T. 17 N., R. 17 E.W.M.  
Portions of Sections 1-18, 21-26 in T. 17 N., R. 18 E.W.M.  
Portions of Sections 1-36 in T. 17 N., R. 19 E.W.M.  
Portions of Sections 2-11, 13-23, 28-34 in T. 17 N., R. 20 E.W.M.  
Portions of Sections 1-4, 8-16, 22-26, 35-36 in T. 18 N., R. 17 E.W.M.  
Portions of Sections 1-36 in T. 18 N., R. 18 E.W.M.

Portions of Sections 2-11, 13-36 in T. 18 N., R. 19 E.W.M.

Portions of Sections 17-21, 28-34 in T. 18 N., R. 20 E.W.M.

**Portions of Sections 25-28, 33-36 in T. 19 N., R. 17 E.W.M.**

Portions of Sections 19-21, 26-35 in T. 19 N., R. 18 E.W.M., all within Kittitas County, Washington.

**G4-35799(E):**

Portions of Sections 1-4, 11, and 12 in T.16 N., R. 19 E.W.M.

Portions of Sections 3-10, 14-18, and 21-23 in T.16 N., R. 20 E.W.M.

Portions of Sections 1, 3, 11-13, and 24 in T.17 N., R. 18 E.W.M.

Portions of Sections 1-36 in T.17 N., R. 19 E.W.M.

Portions of Sections 2-11, 13-23, and 28-34 in T.17 N., R. 20 E.W.M.

Portions of Sections 1, 11-14, 23-27, and 34-36 in T.18 N., R. 18 E.W.M.

Portions of Sections 2-11, and 13-36 in T.18 N., R. 19 E.W.M.

Portions of Sections 17-21, and 28-34 in T.18 N., R. 20 E.W.M

**G4-35799(F): Lake Easton Bedrock Aquifer**

Portions of Sections 10-11 and 14-15, T. 20 N., R. 13 E.W.M.

**G4-35799(G): Stone Ridge Bedrock Aquifer**

Portions of Sections 1-2 and 12, T. 19 N., R. 14 E.W.M., and

Section 6, T. 19 N., R. 15 E.W.M.

**G4-35799(H): Darrington Phyllite Bedrock Aquifer**

Portions of Sections 6-8, T. 19 N., R. 15 E.W.M.

**G4-35799(K): Cle Elum Ridge Bedrock Aquifer**

Portions of Sections 15-23, 27-30 and 33-34, T. 20 N., R. 16 E.W.M., and

Section 13, 24, and 25, T. 20 N., R. 15 E.W.M.

**G4-35799(L): Cle Elum Lake Sediment Aquifer**

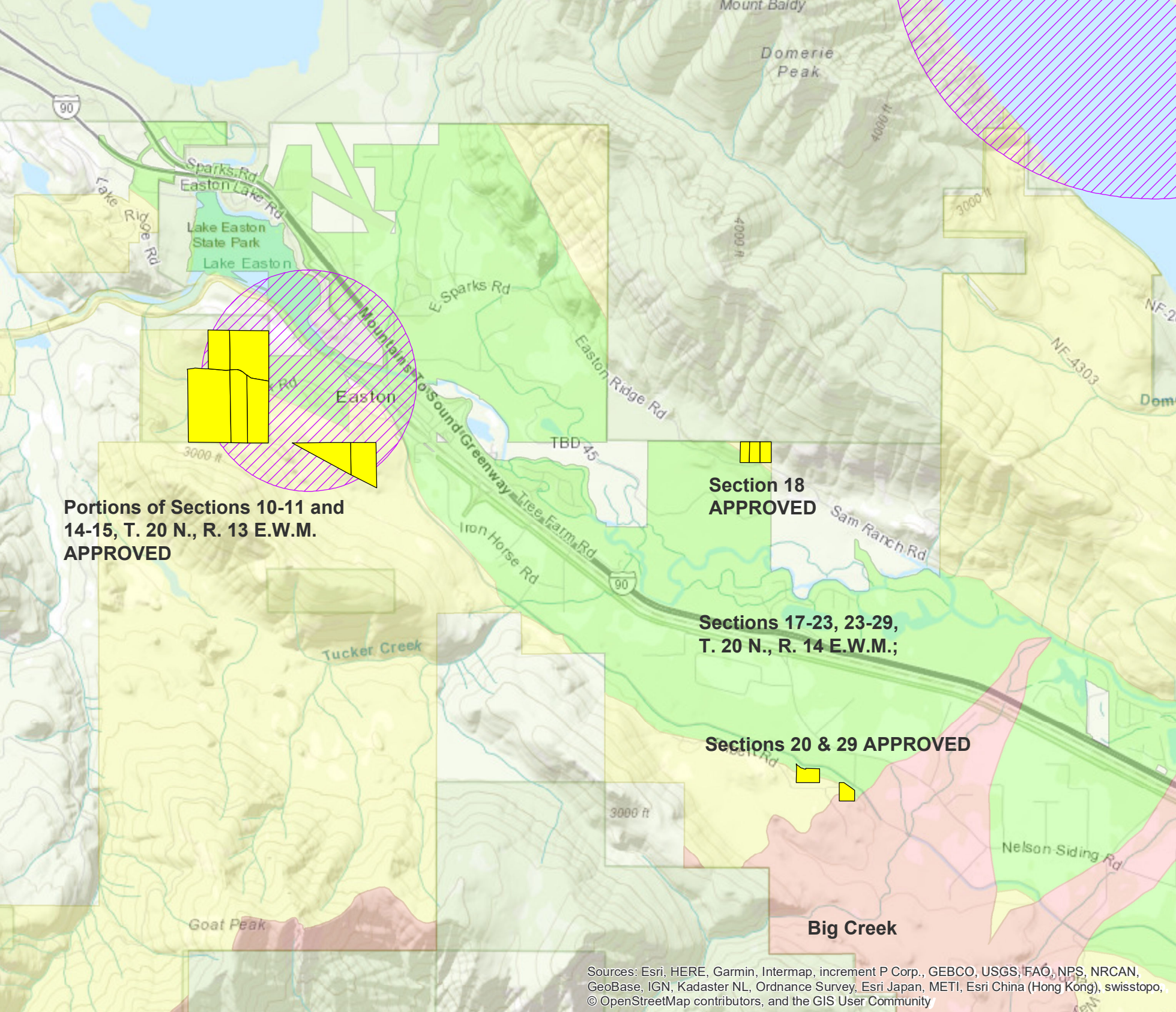
Portions of Sections 8-9, 15-16, 20-23, 25-29, and 33-36, T. 21 N., R. 14 E.W.M., and Section 1-2, and 11-12, and 13-14, T. 20 N., R. 14 E.W.M.

**G4-35799(M): Dry-Morgan Bedrock Aquifer**

Portions of Sections 4-5 and 8-9, T. 21 N., R. 14 E.W.M.

**G4-35799(N): Bell Creek Bedrock Aquifer**

Portions of Sections 16 and 21, T. 21 N., R. 14 E.W.M.



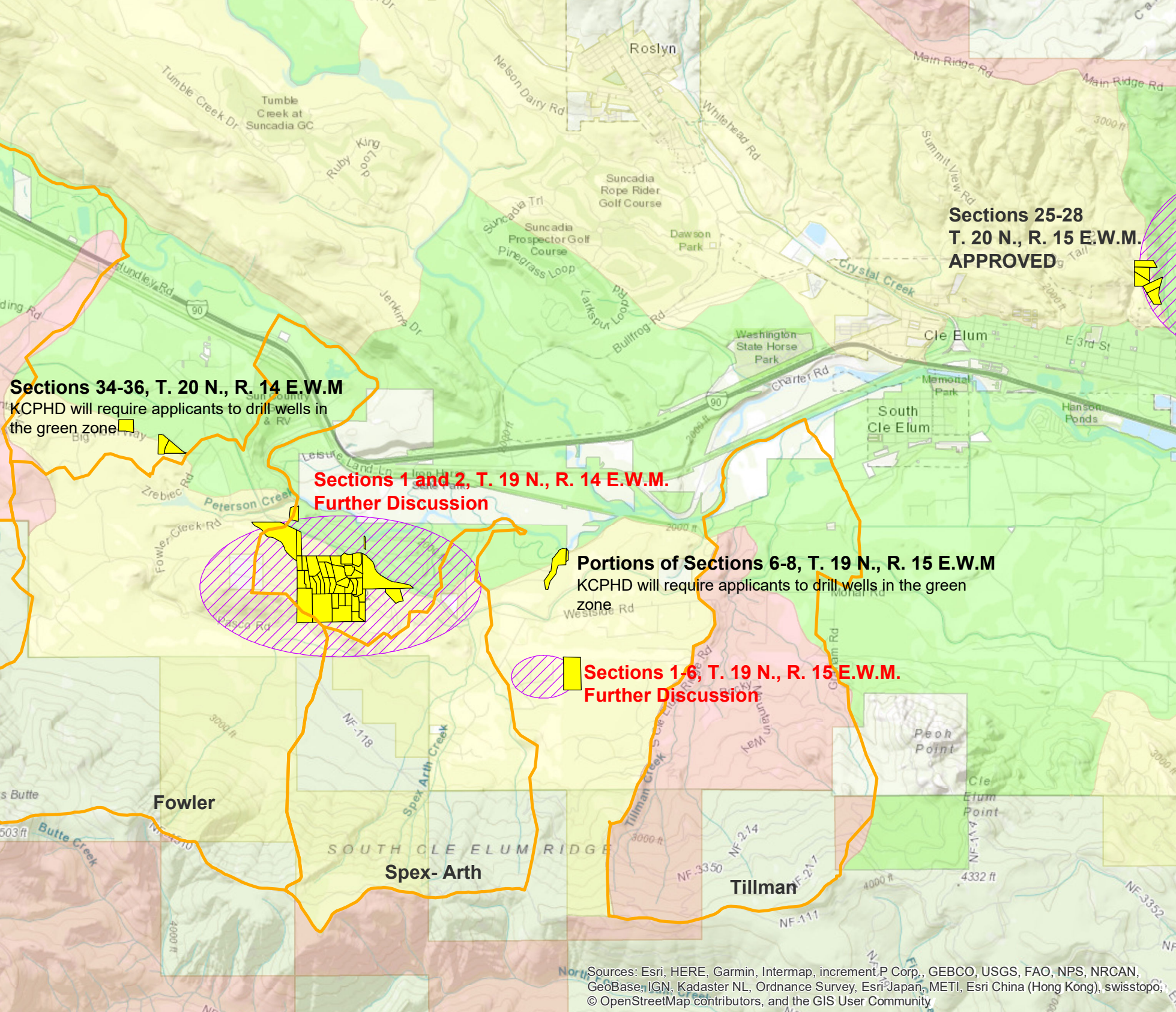
**Portions of Sections 10-11 and  
14-15, T. 20 N., R. 13 E.W.M.  
APPROVED**

**Section 18  
APPROVED**

**Sections 17-23, 23-29,  
T. 20 N., R. 14 E.W.M.;**

**Sections 20 & 29 APPROVED**





**Sections 25-28  
T. 20 N., R. 15 E.W.M.  
APPROVED**

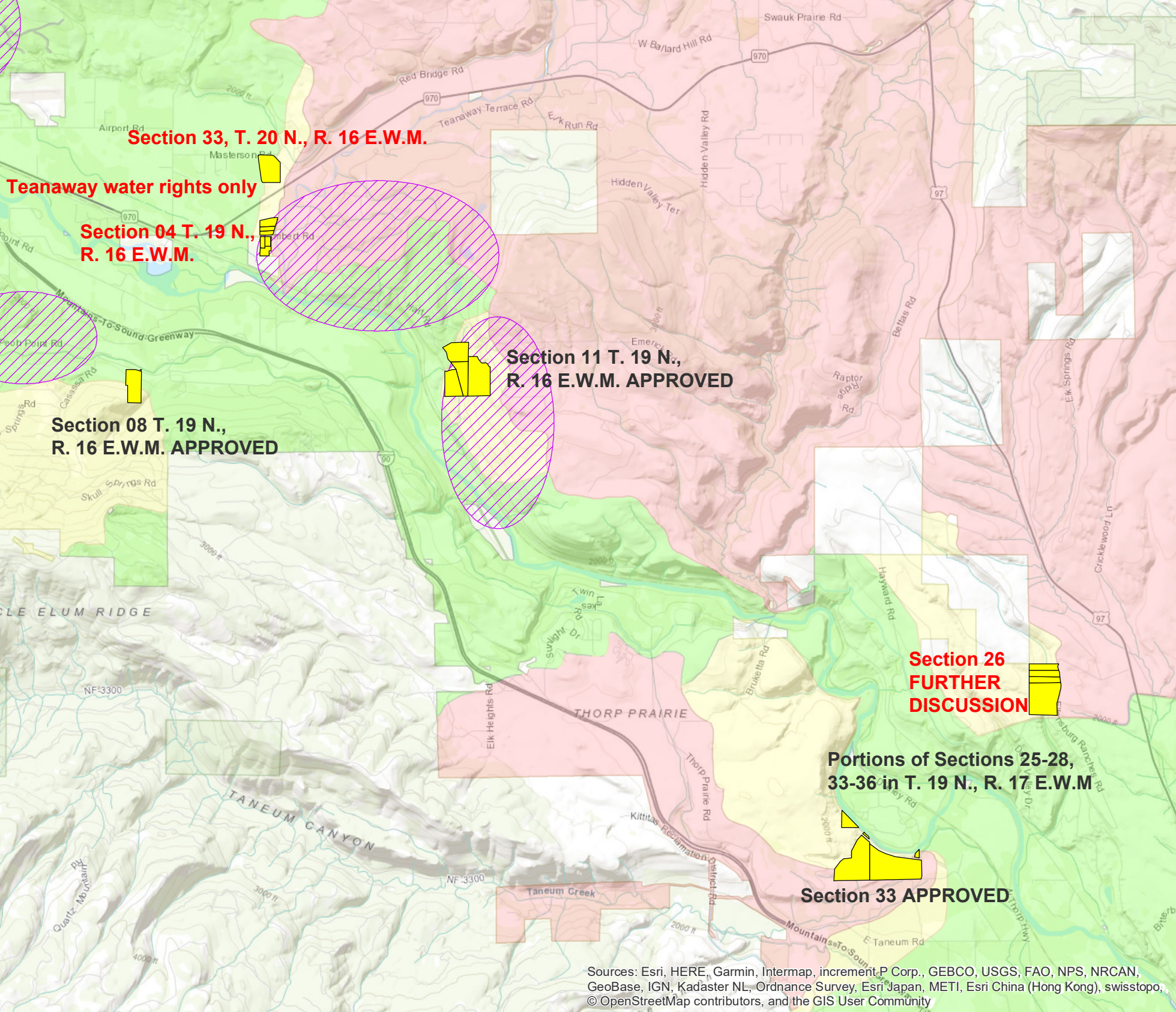
**Sections 34-36, T. 20 N., R. 14 E.W.M**  
KCPHD will require applicants to drill wells in the green zone

**Sections 1 and 2, T. 19 N., R. 14 E.W.M.  
Further Discussion**

**Portions of Sections 6-8, T. 19 N., R. 15 E.W.M**  
KCPHD will require applicants to drill wells in the green zone

**Sections 1-6, T. 19 N., R. 15 E.W.M.  
Further Discussion**





**Section 33, T. 20 N., R. 16 E.W.M.**

**Teanaway water rights only**

**Section 04 T. 19 N.,  
R. 16 E.W.M.**

**Section 08 T. 19 N.,  
R. 16 E.W.M. APPROVED**

**Section 11 T. 19 N.,  
R. 16 E.W.M. APPROVED**

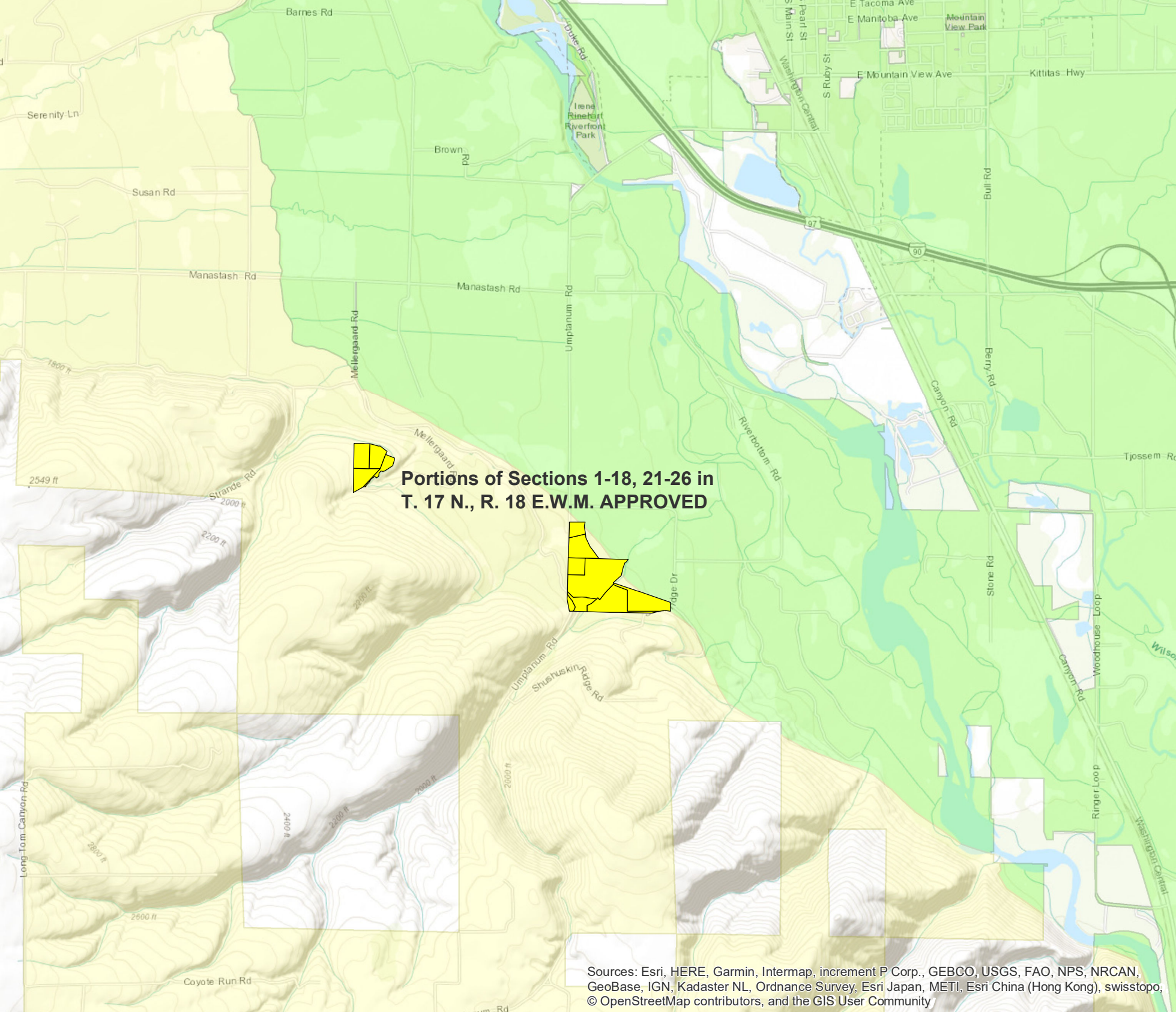
**Section 26  
FURTHER  
DISCUSSION**

**Portions of Sections 25-28,  
33-36 in T. 19 N., R. 17 E.W.M**

**Section 33 APPROVED**

Sources: Esri, HERE, Garmin, Intermap, increment P Corp., GEBCO, USGS, FAO, NPS, NRCAN, GeoBase, IGN, Kadaster NL, Ordnance Survey, Esri Japan, METI, Esri China (Hong Kong), swisstopo, © OpenStreetMap contributors, and the GIS User Community





**Portions of Sections 1-18, 21-26 in  
T. 17 N., R. 18 E.W.M. APPROVED**