

Regional Climate Perspective

Nick Bond & Karin Bumbaco

Office of the Washington State Climatologist

Cooperative Institute for Climate, Ocean, and Ecosystem Studies

University of Washington

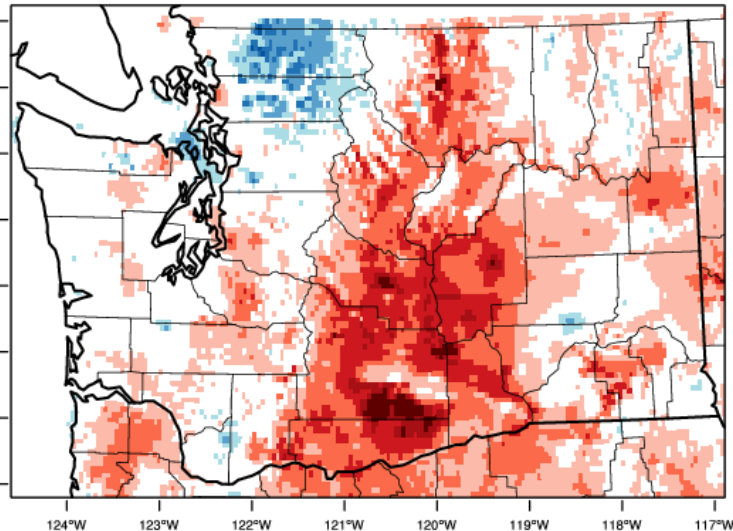
25 June 2021

2021 Water Year

Temperature

Washington - Mean Temperature

October-May 2021 Departure from 1981-2010 Normal

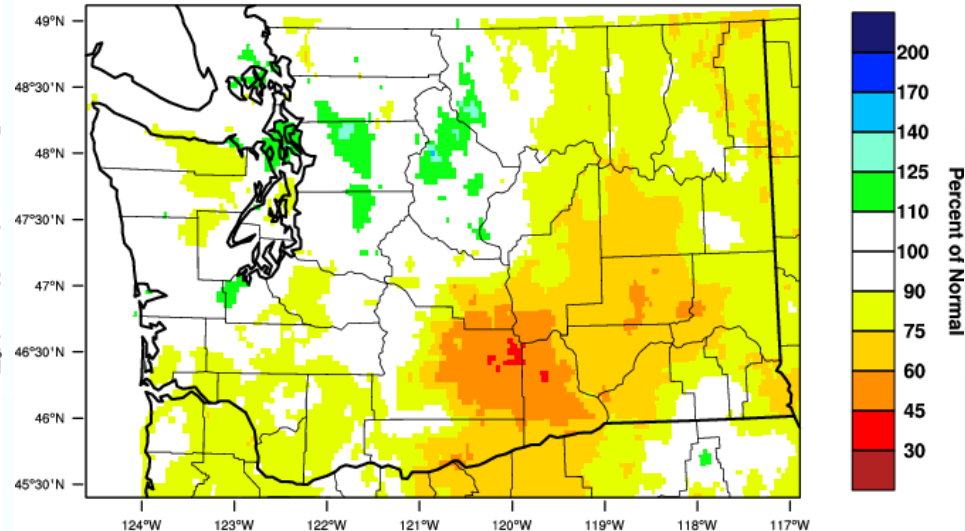


WestWide Drought Tracker, U Idaho/WRCC Data Source: PRISM (Prelim), created 16 JUN 2021

Precipitation

Washington - Precipitation

October-May 2021 Percent of 1981-2010 Normal



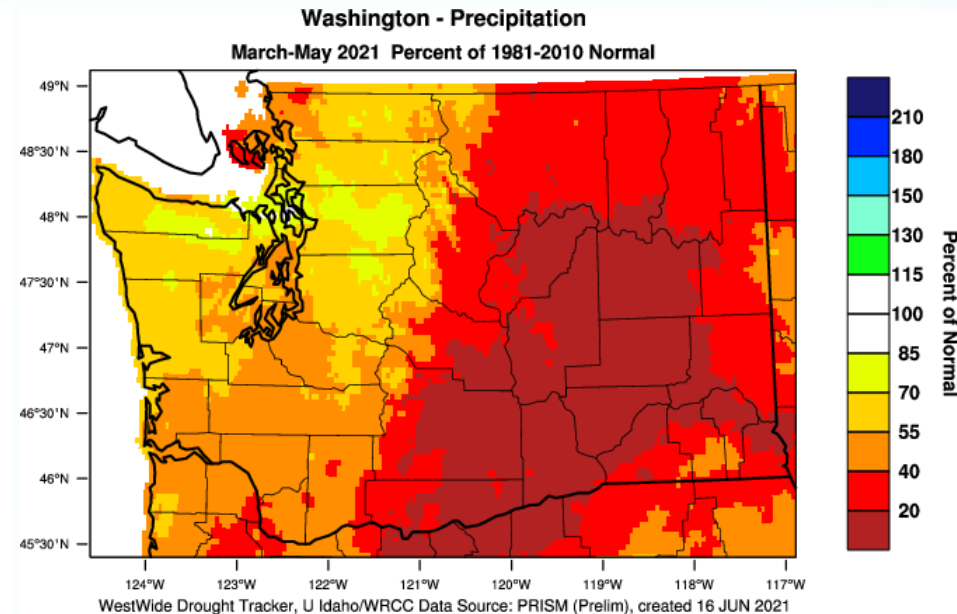
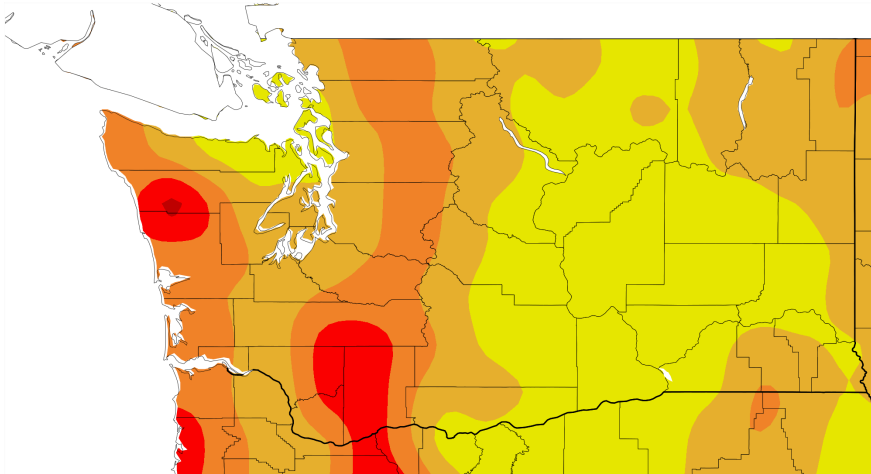
WestWide Drought Tracker, U Idaho/WRCC Data Source: PRISM (Prelim), created 16 JUN 2021

- Averaged statewide, WY 2021 warmer than normal (+0.8°F), tying as 18th warmest*
- Averaged statewide, below normal precipitation for WY 2021 (-2.75"); Lower Columbia Basin in area below 75% of normal ranks in the bottom 10%

*Records since 1895

Spring 2021

Departure from Normal Precipitation (in)
3/1/2021 – 5/31/2021



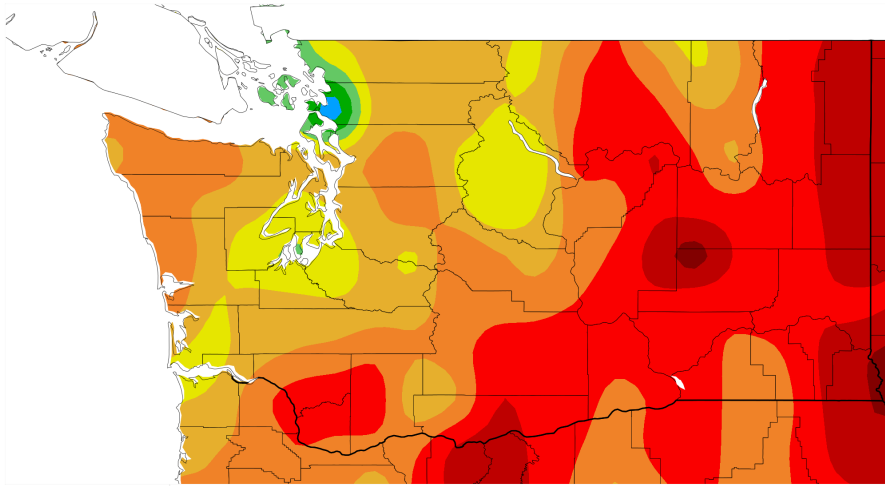
Generated 6/20/2021 at HPRCC using provisional data. NOAA Regional Climate Centers

- Averaged statewide, 2nd driest spring on record (-5.32"); driest spring was back in 1924

June 2021

Temperature

Departure from Normal Temperature (F)
6/1/2021 – 6/22/2021

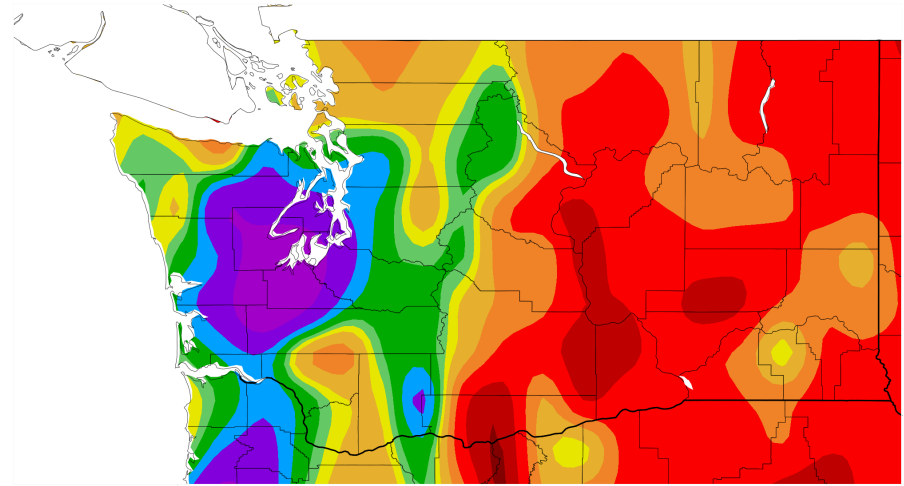


Generated 6/23/2021 at HPRCC using provisional data.

NOAA Regional Climate Cent

Precipitation

Percent of Normal Precipitation (%)
6/1/2021 – 6/22/2021

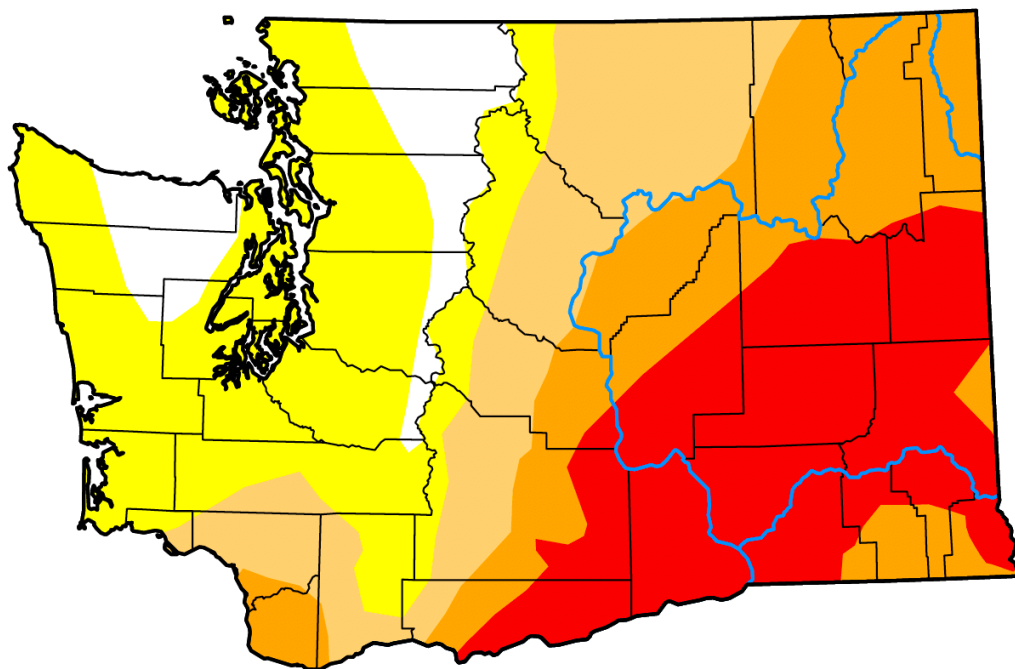


Generated 6/23/2021 at HPRCC using provisional data.

NOAA Regional Climate Centers

U.S. Drought Monitor Washington

June 22, 2021
(Released Thursday, Jun. 24, 2021)
Valid 8 a.m. EDT



Drought Conditions (Percent Area)

	None	D0	D1	D2	D3	D4
Current	8.32	28.10	17.71	21.03	24.84	0.00
Last Week <i>06-15-2021</i>	8.32	28.10	17.79	22.75	23.03	0.00
3 Months Ago <i>03-23-2021</i>	73.45	16.57	6.19	3.79	0.00	0.00
Start of Calendar Year <i>12-29-2020</i>	59.23	21.47	10.37	6.25	2.67	0.00
Start of Water Year <i>09-29-2020</i>	37.23	19.24	26.50	10.90	6.12	0.00
One Year Ago <i>06-23-2020</i>	58.72	14.60	11.78	14.90	0.00	0.00

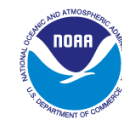
Intensity:

None	D2 Severe Drought
D0 Abnormally Dry	D3 Extreme Drought
D1 Moderate Drought	D4 Exceptional Drought

The Drought Monitor focuses on broad-scale conditions. Local conditions may vary. For more information on the Drought Monitor, go to <https://droughtmonitor.unl.edu/About.aspx>

Author:

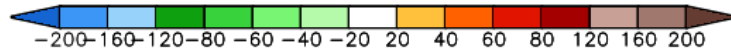
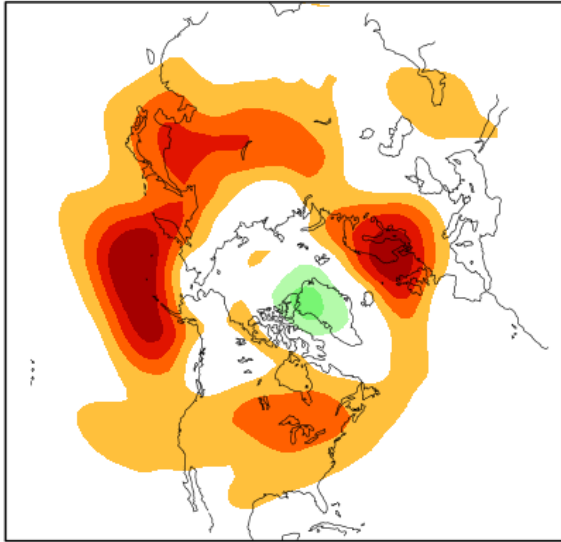
Curtis Riganti
National Drought Mitigation Center



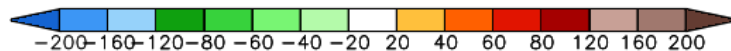
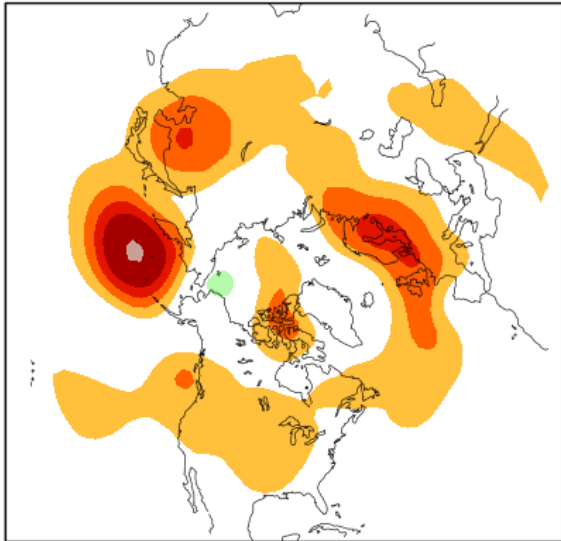
droughtmonitor.unl.edu

CFSv2 Weeks 3 & 4 500 hPa Z Anomalies (m)
16 Member Ensemble Mean Forecast from 23Jun2021

Week 3 8Jul2021–14Jul2021



Week 4 15Jul2021–21Jul2021



Latest Set of Week 3-4 Forecasts from CFSv2

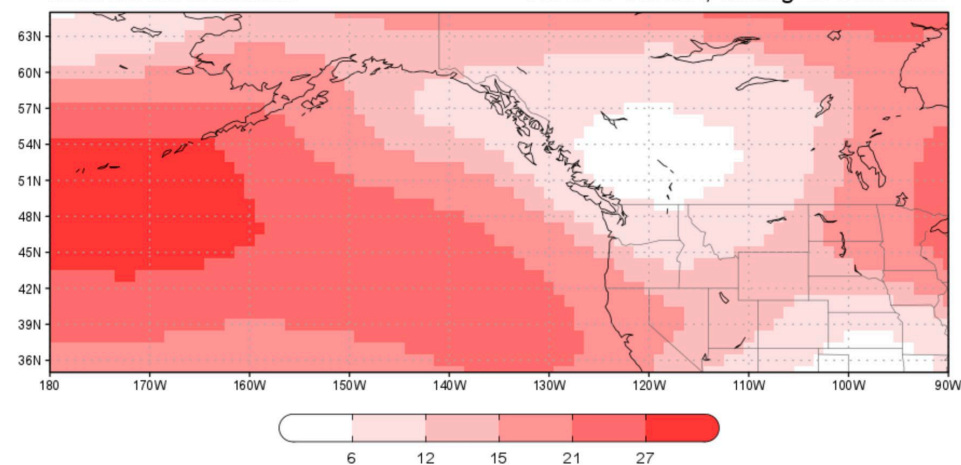
Positive 500 hPa height anomalies indicate warm and dry conditions are more likely for the Pacific NW, especially east of the Cascade Mountains.

Model Runs
from last week

SubX Forecast of 500mb Height Anomaly [m]

Multi Model Ensemble

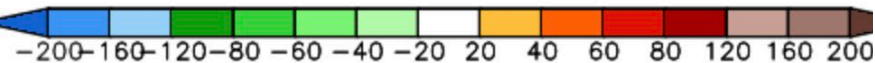
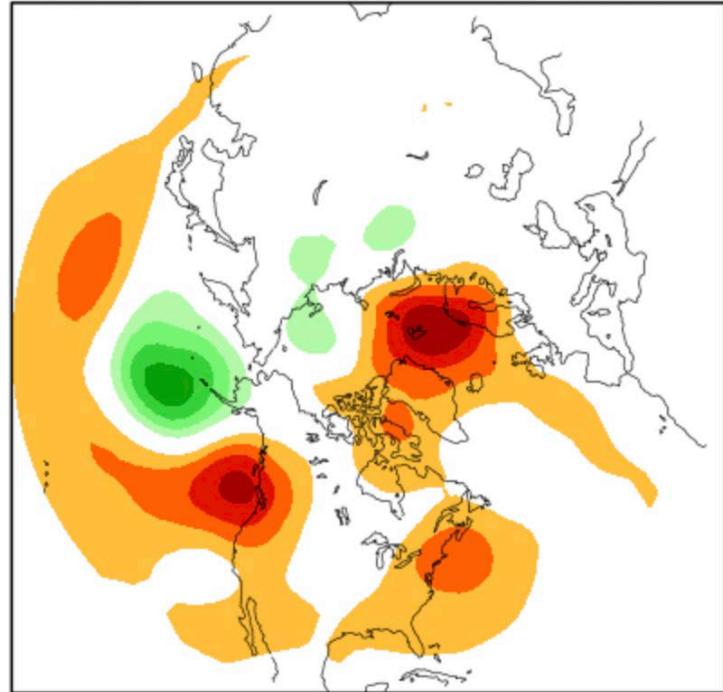
Week 3-4 Mean, ending 16-JUL-2021



Extended Forecast

CFSv2 Weeks 3 & 4 500 hPa Z Anomalies (m)
16 Member Ensemble Mean Forecast from 09Jun2021

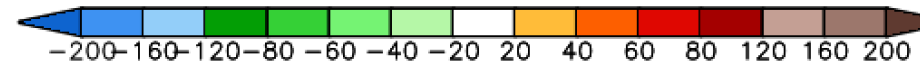
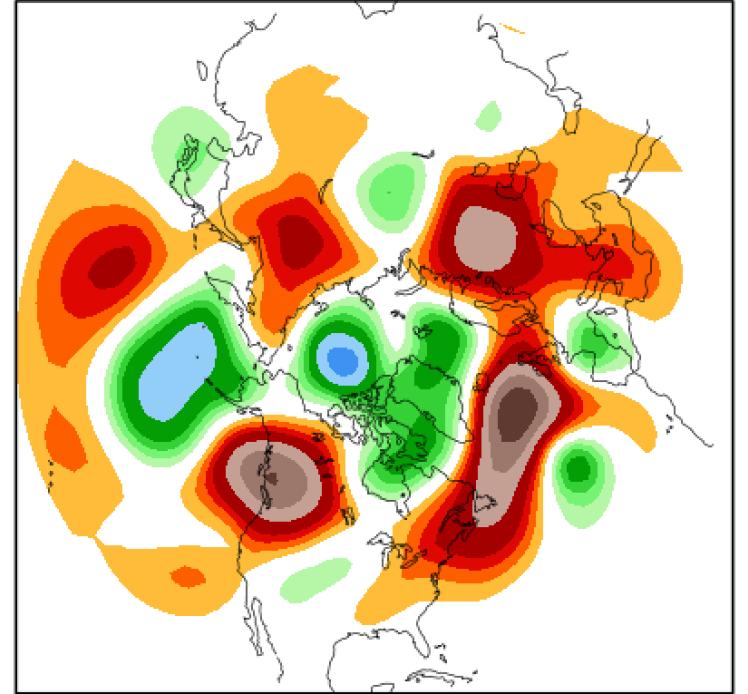
Week 3 24Jun2021–30Jun2021



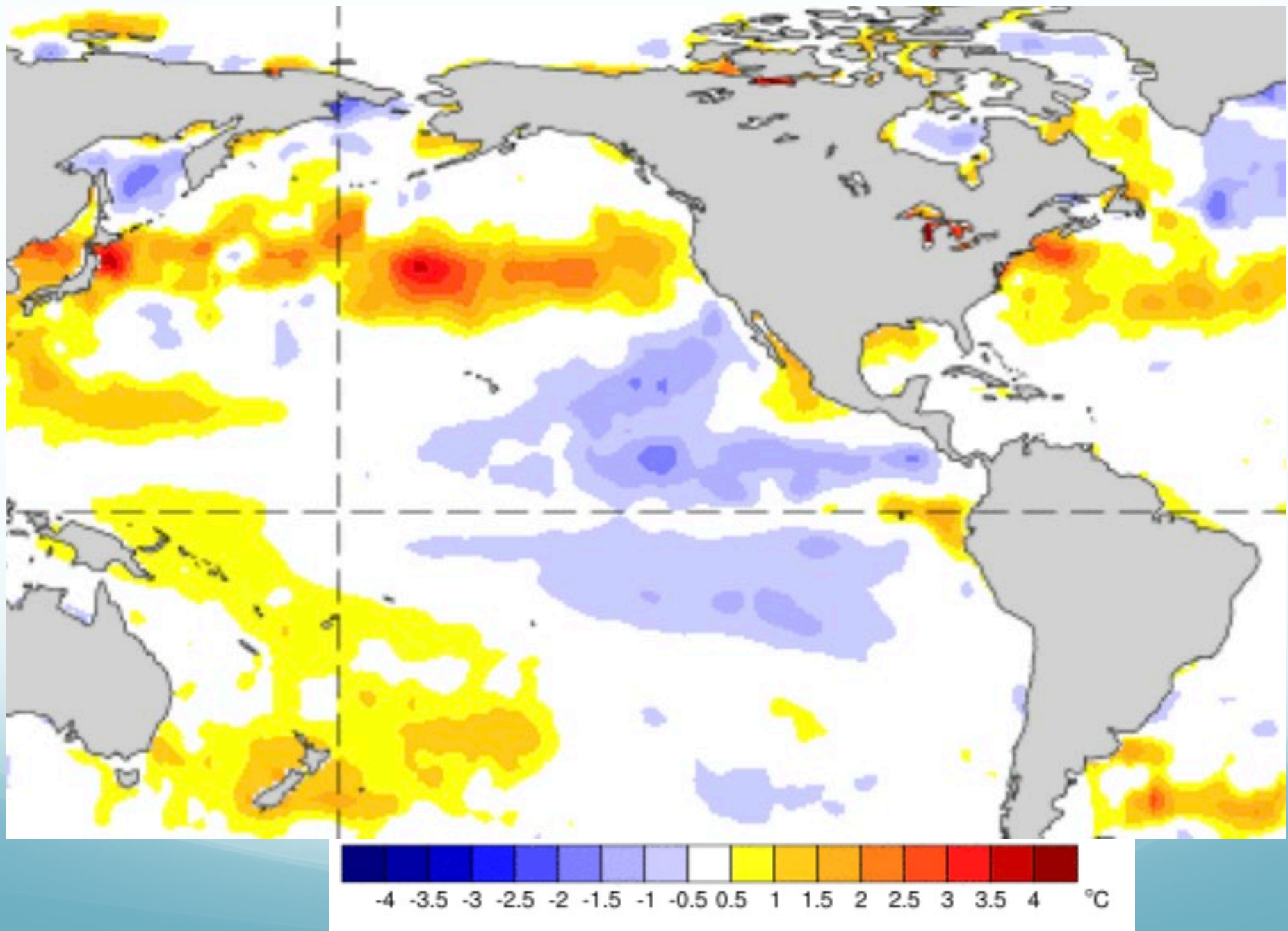
Shorter-Term Forecast

CFSv2 Weeks 1 & 2 500 hPa Z Anomalies (m)
16 Member Ensemble Mean Forecast from 23Jun2021

Week 1 24Jun2021–30Jun2021



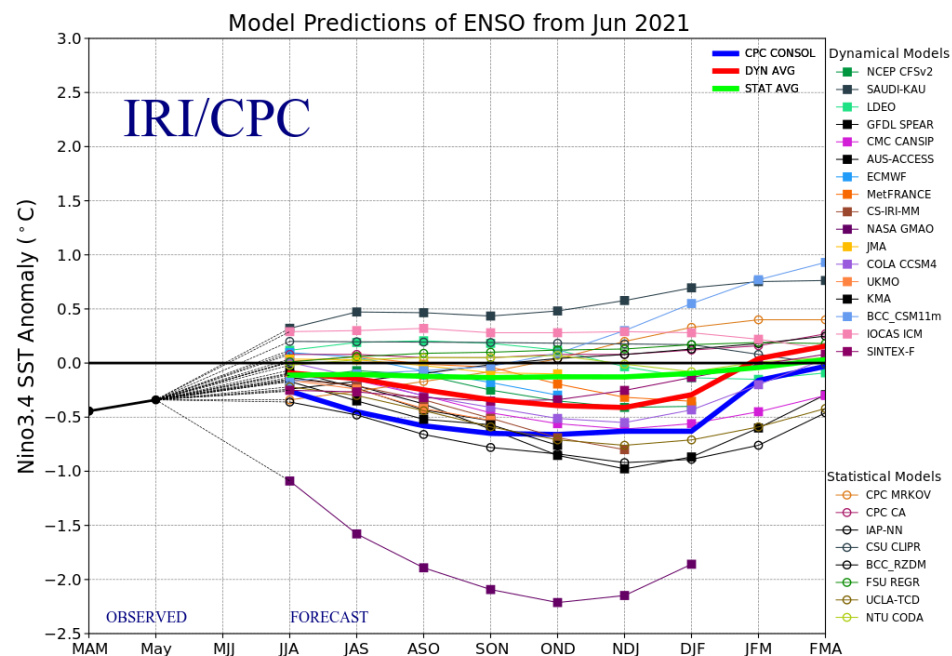
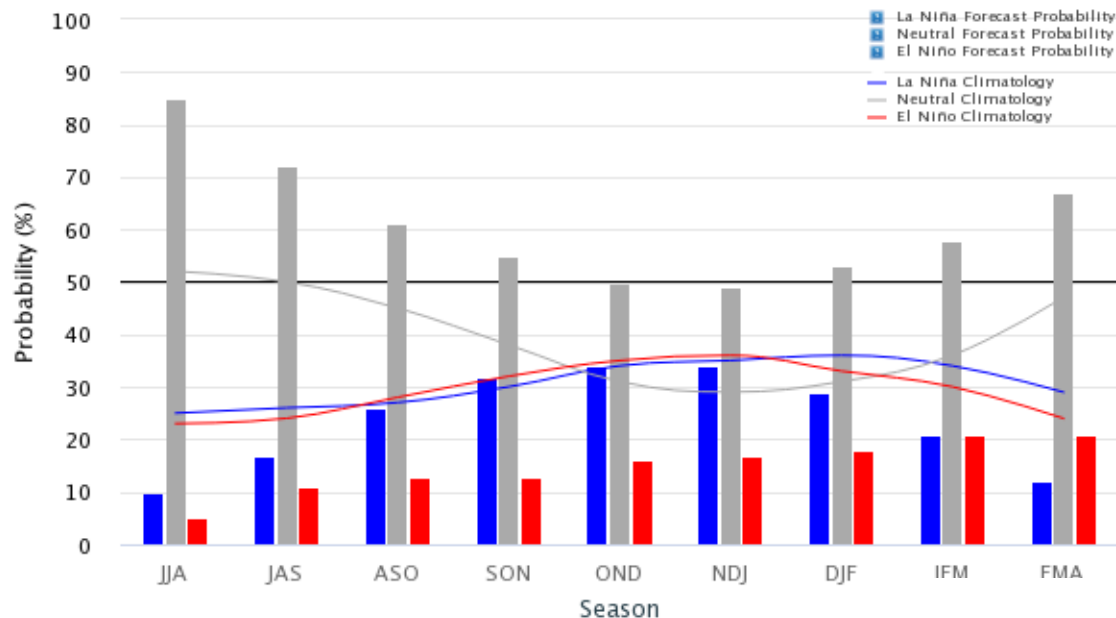
SST Anomalies: 13-19 June 2021



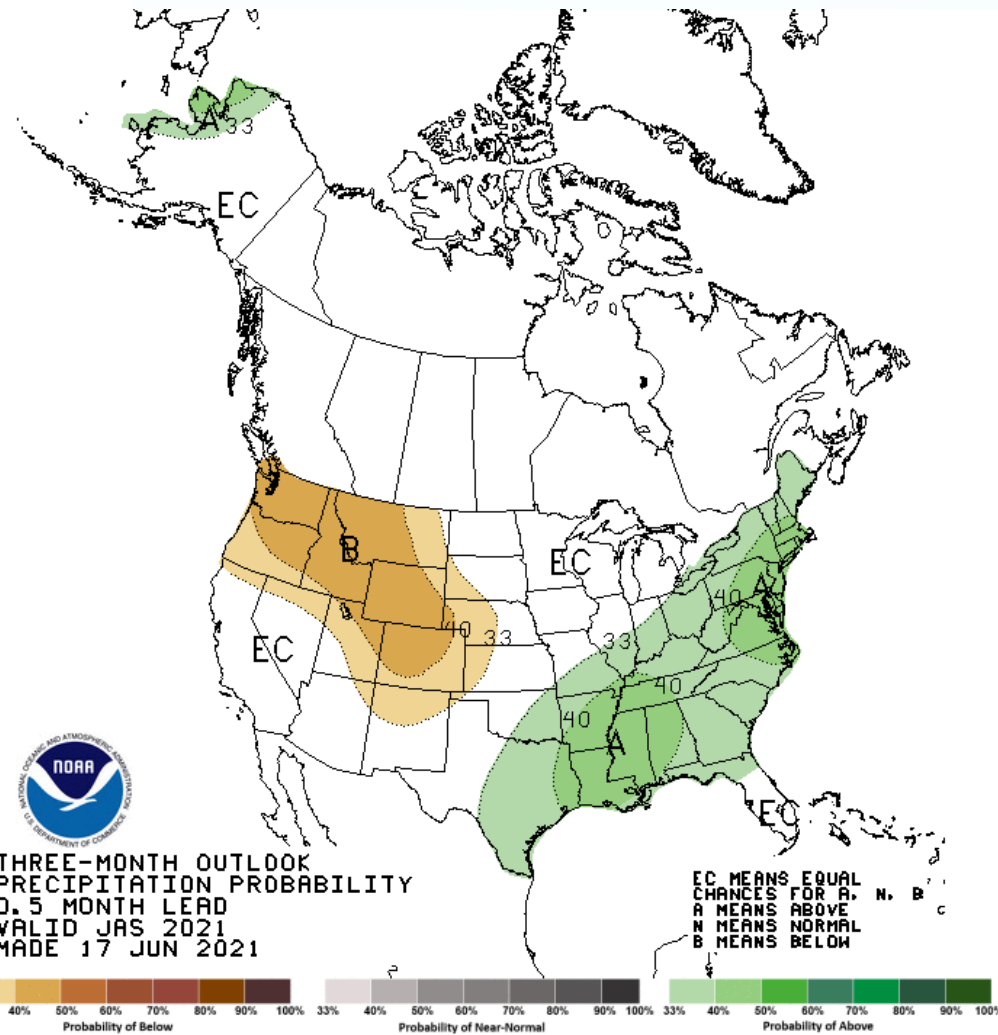
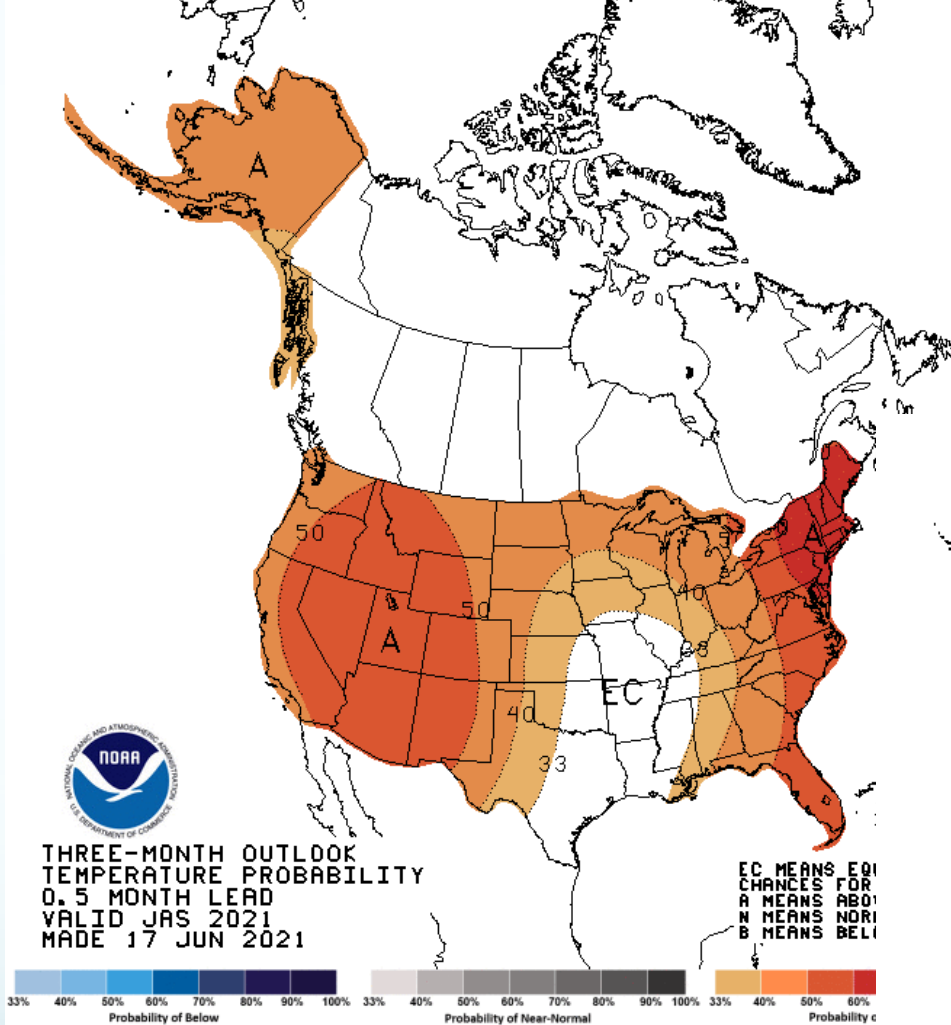
Mid-June 2021 IRI/CPC Model-Based Probabilistic ENSO Forecasts

ENSO state based on NINO3.4 SST Anomaly
Neutral ENSO: -0.5°C to 0.5°C

ENSO Predictions

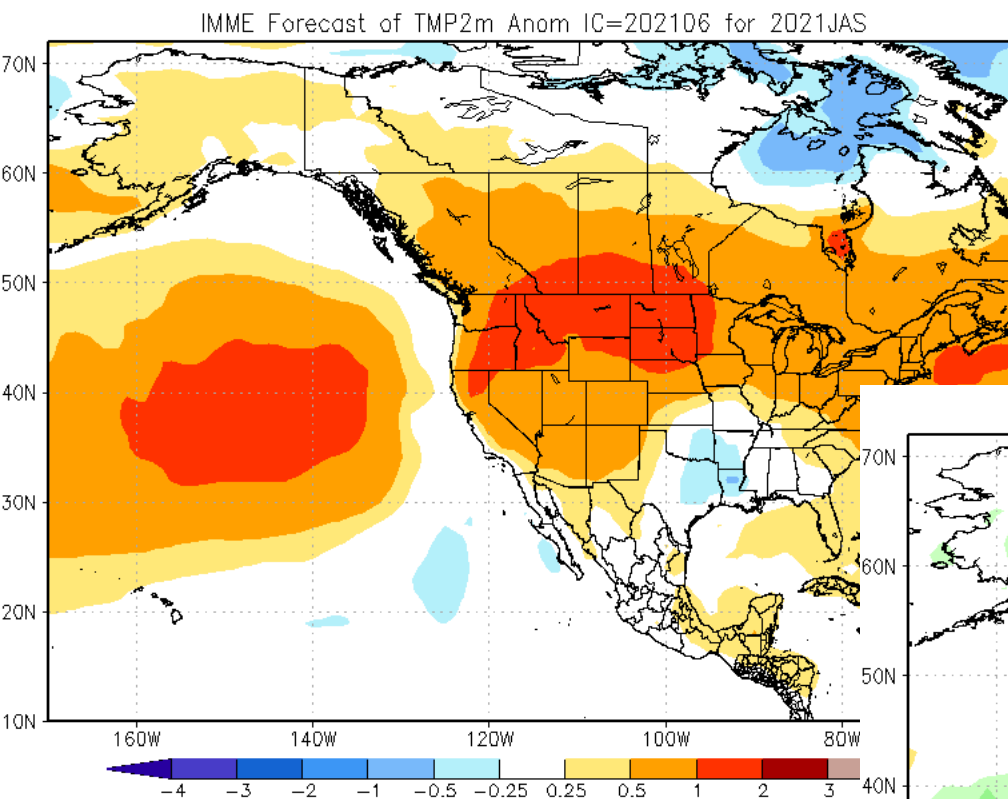


NOAA/CPC Forecasts for Jul-Sep 2021

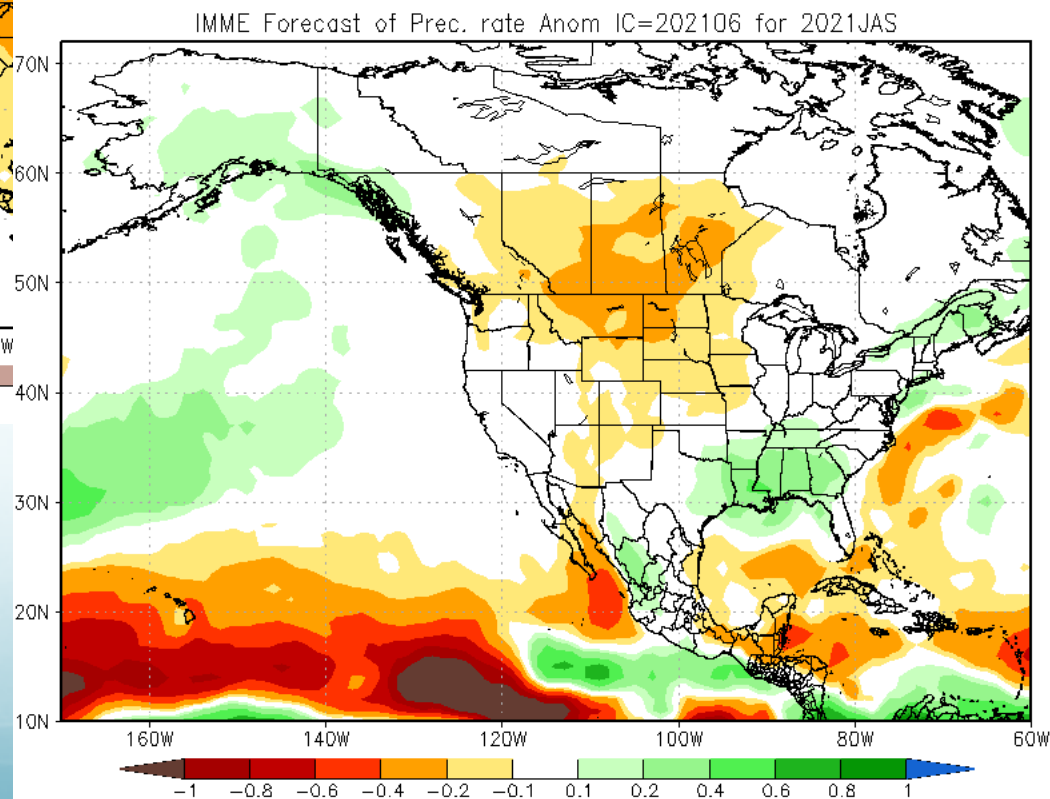


Composite Maps from the International Multi-Model Ensemble - JJA 2021

Air Temperature



Precipitation



Final Remarks

- Water year 2021 has had above-average temperatures for most of WA, with below normal precipitation except for the north-central Cascades
- The lower elevations of eastern WA are in extreme drought, with some substantial impacts
- I am concerned that we may be in for an extended interval of hot temperatures across the Pacific NW
- Regarding the heat wave that is cranking up, perhaps I should arrange to get paid for media interviews on a commission basis...

Jeff: Do you want to share an agent?