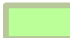




Skagit Basin Permit Exempt Well Water Availability Area


Skagit River Watershed, Washington

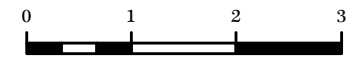
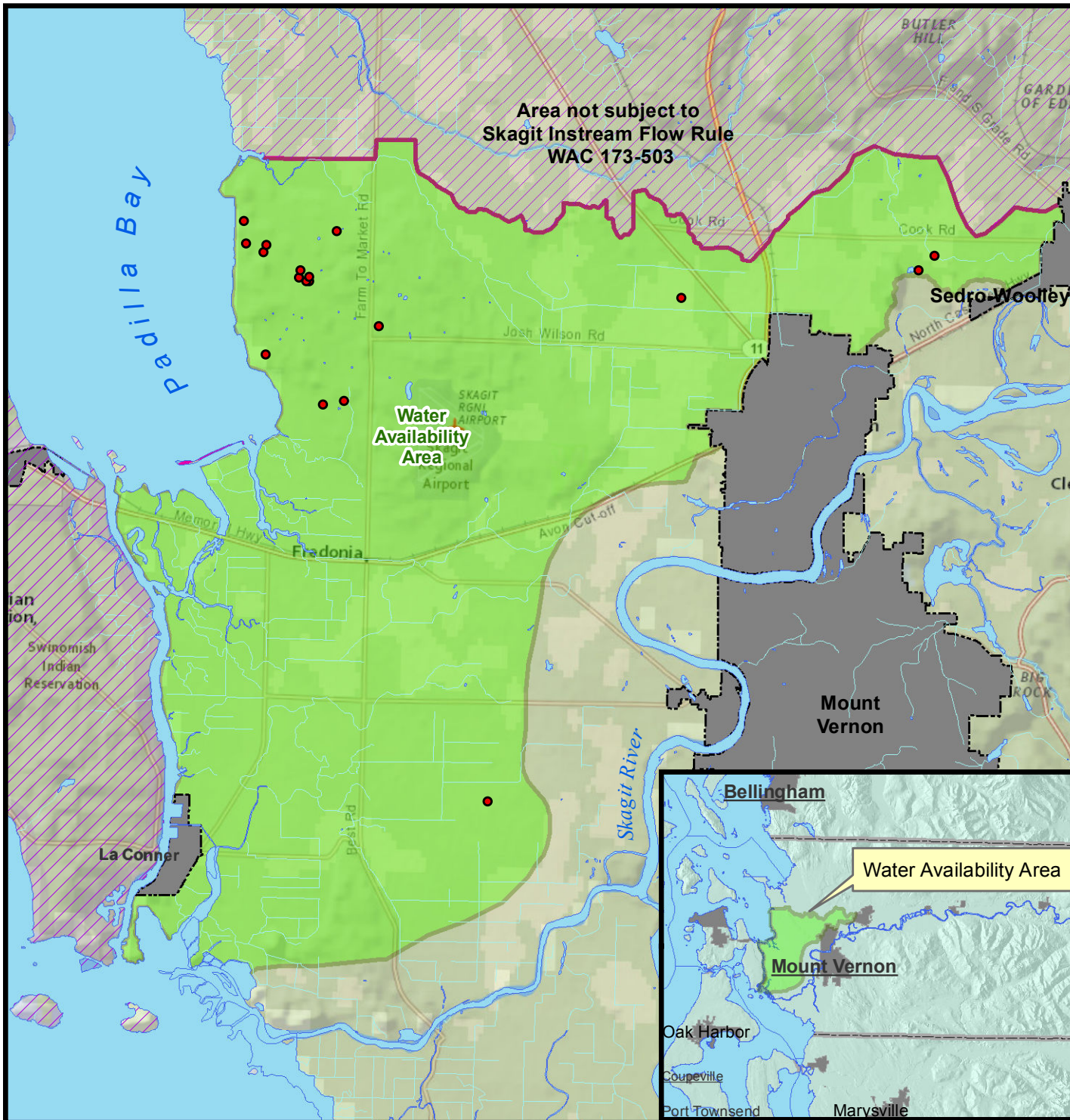


 Area included in WAC 173-503 where water is available for Permit Exempt Wells (90.44.050 RCW)

 Area not subject to Skagit Instream Flow Rule WAC 173-503

 Properties developed 2001-2013. These properties appear to have a legal water supply for use subject to 90.44.050 RCW

 City Boundaries



Miles
1/12/2017

Projection: NAD 83 HARN Washington State Plane South

Skagit reservation accounting datasets based on building permits approved by Skagit County 2001-2013.

Service Layer Credits: Content may not reflect National Geographic's current map policy. Sources: National Geographic, Esri, DeLorme, HERE, UNEP-WCMC, USGS, NASA, ESA, METI, NRCAN, GEBCO, NOAA, increment P Corp.