

GEOGRAPHY OVERVIEW AND COMMITTEE NEEDS



WRIA 15 Watershed Restoration and Enhancement Committee
December 18, 2018

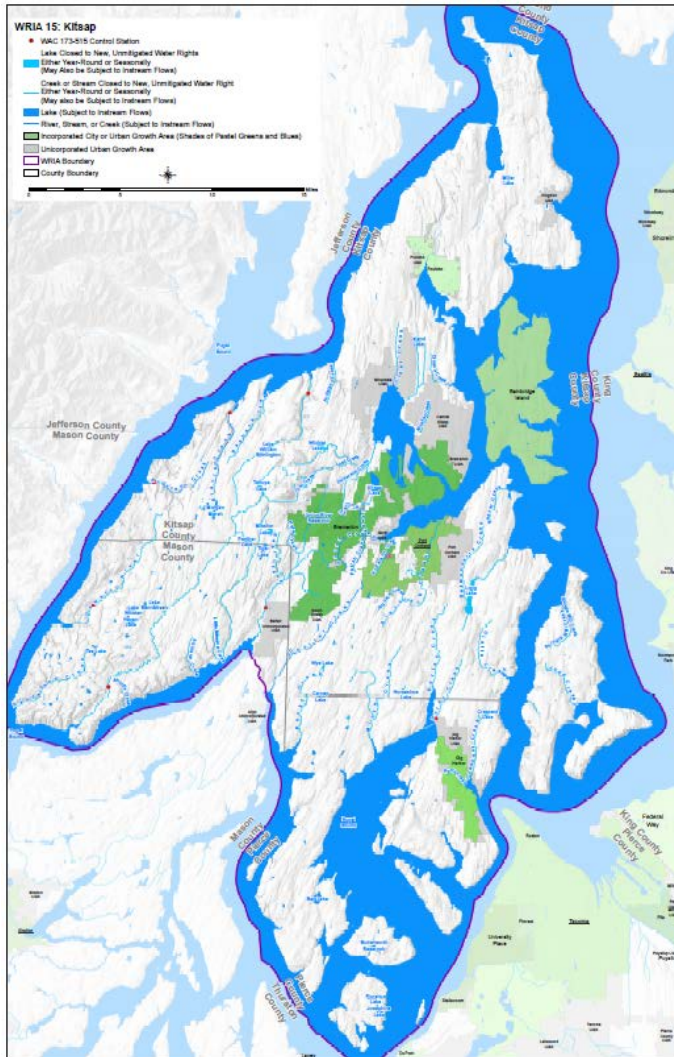
Today's Overview

- Overview of WRIA 15 Geography
 - Water Resources and Sources Overview
 - Geography Complications!
- Opportunities for Coordination/Collaboration
- Initial Discussion on Data Availability, Data Needs, and Training Needs



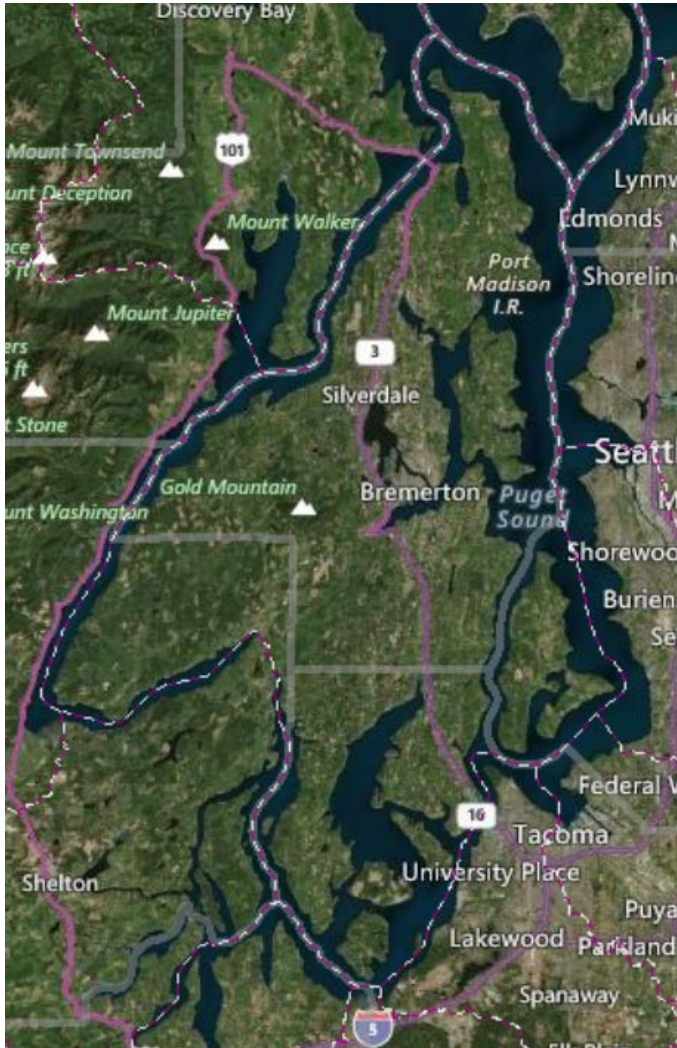
Photo: Chris Dunagan

The Kitsap Watershed / Water Resource Inventory Area 15 Water Resource Management



- Kitsap County and portions of Mason, King and Pierce counties.
- Port Orchard, Bremerton, Bainbridge Island, Poulsbo, and Gig Harbor.
- Five tribes with reservation land and/or usual and accustomed fishing areas.

The WRIA 15 Geography

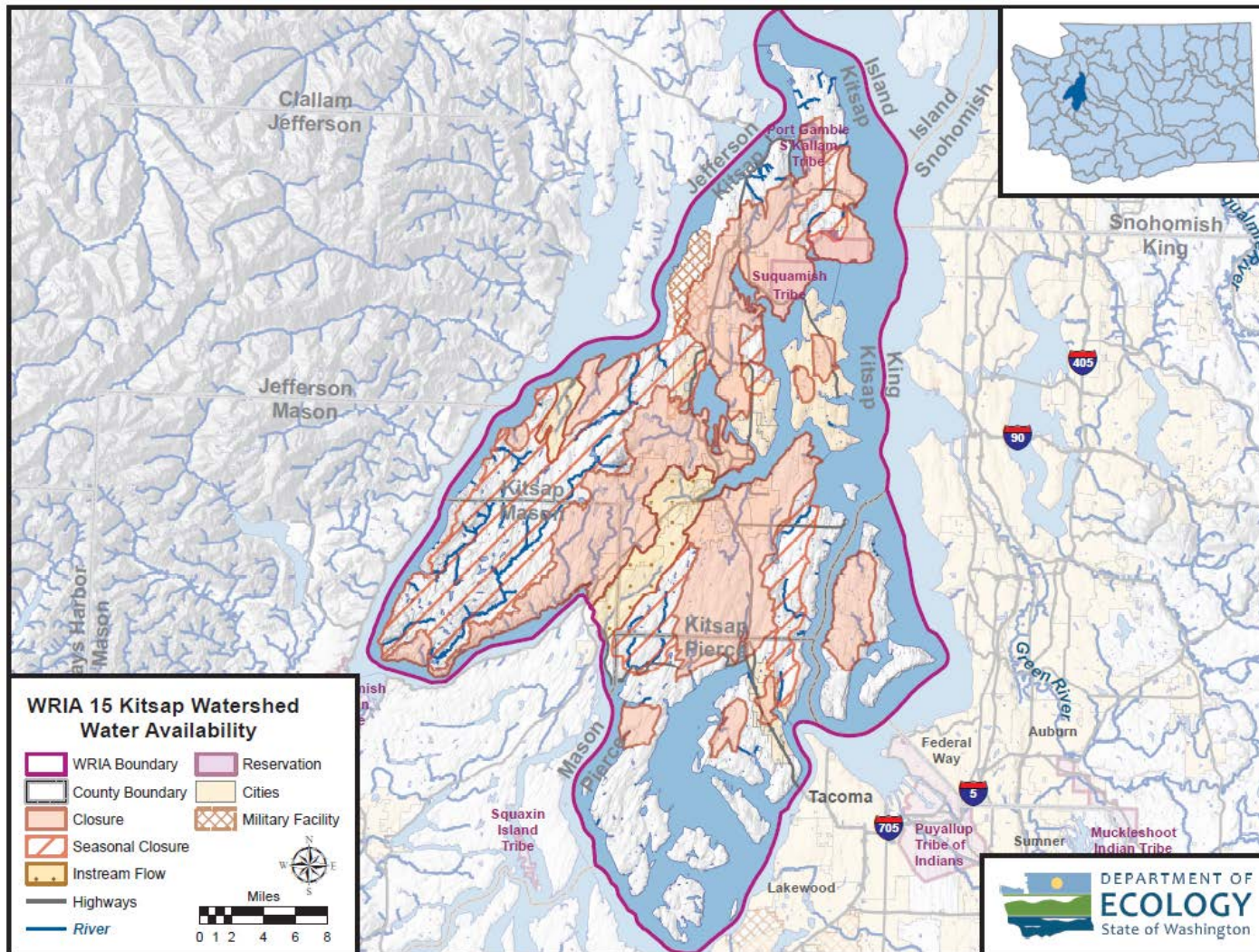


- About 575 square miles in area (+ 37 square miles for Vashon/Maury)
- Elevation: sea level to 1700'
- “Rain-dominated” basin

Water Sources

- System of smaller streams
- Streamflow driven by annual rainfall
- Annual precipitation in ranges from 30 to 70 inches per year
- ***Groundwater and surface water are least available when water demands are the highest.***

Water Resource Management



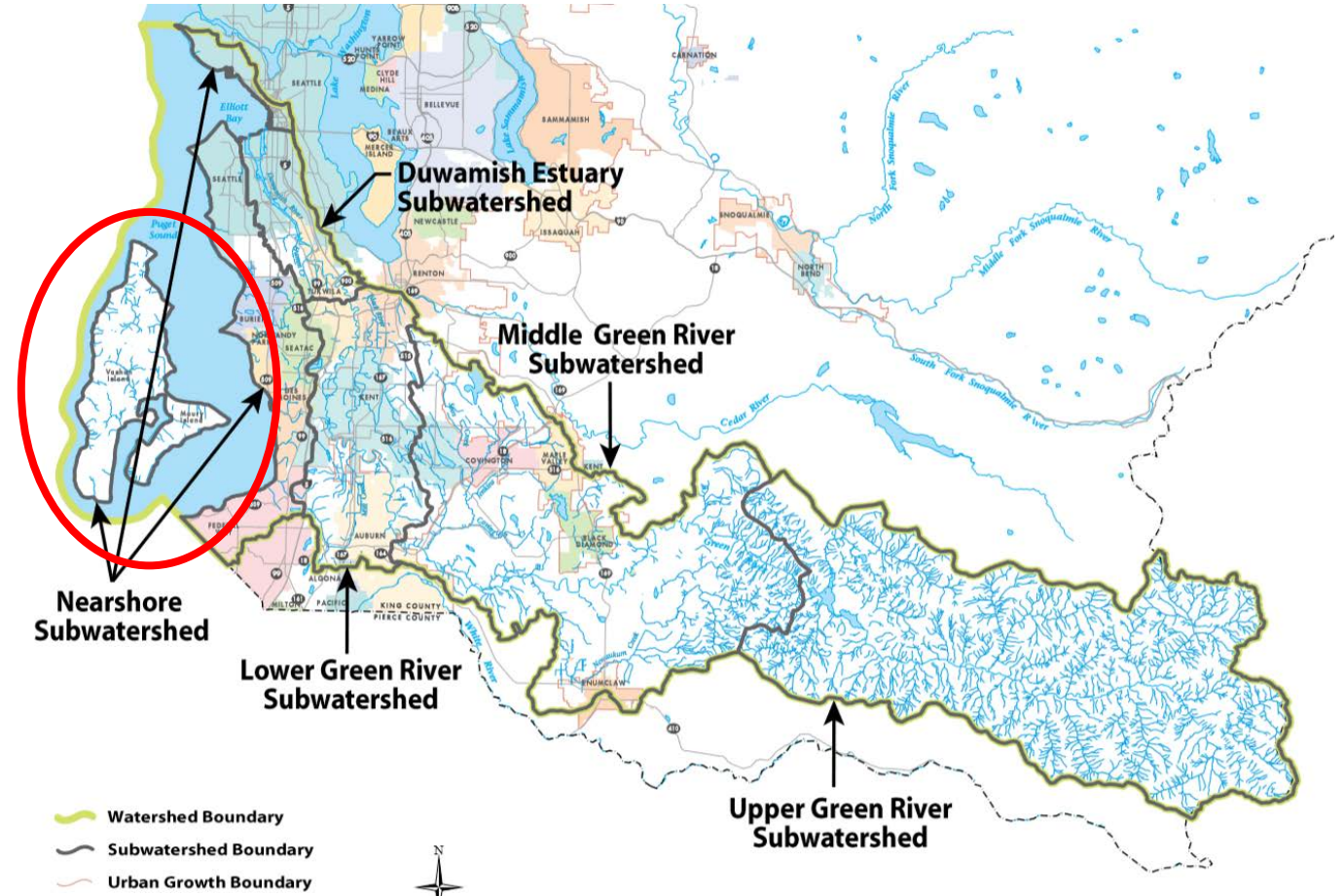
- Instream Resources Protection Program rule ([WAC 173-515](#))
- Closes the watershed to new appropriations that would harm stream flows
- New water appropriations – mitigation
- Coastal applicants - address the risk of seawater intrusion

Questions/Complications Around Geography

Geography Questions: Vashon and Maury Islands

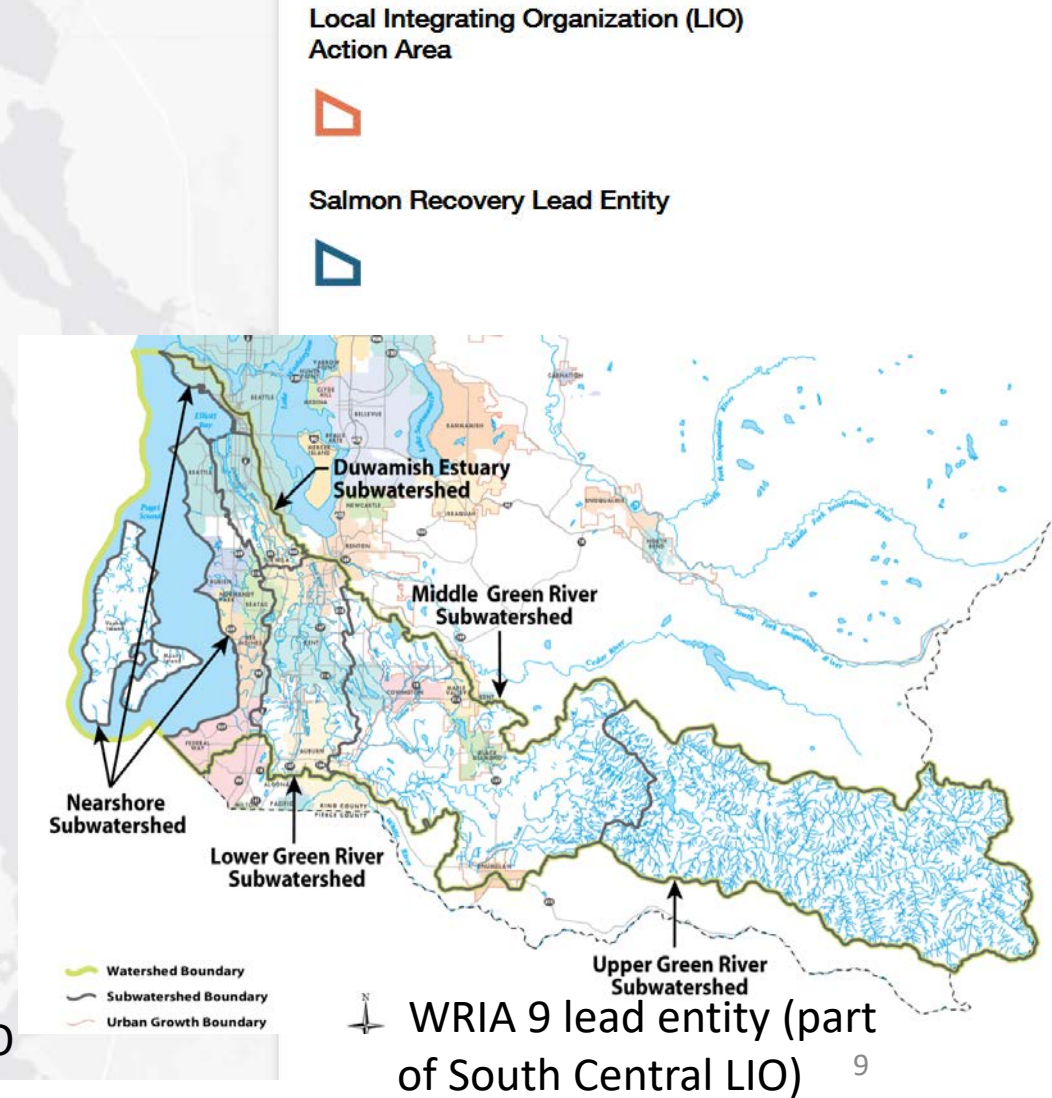
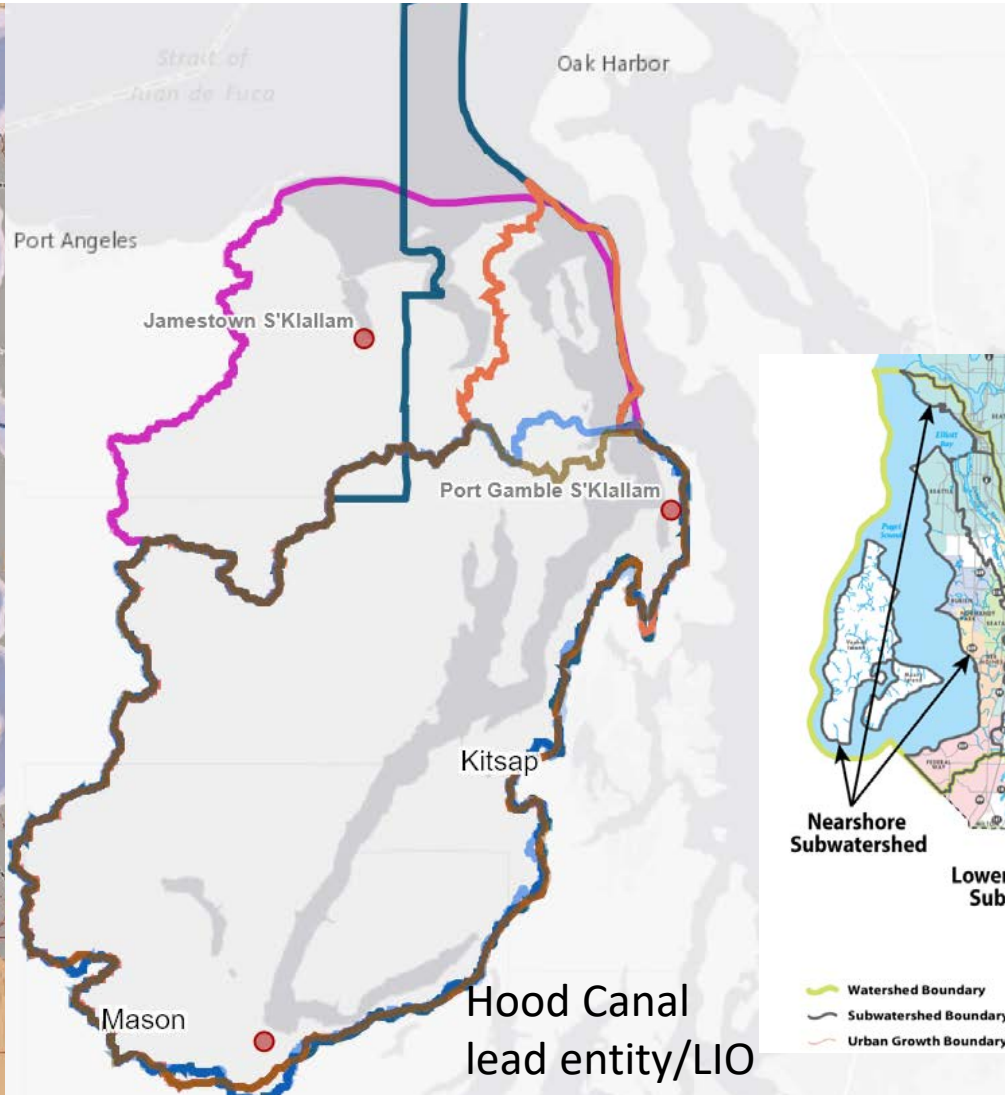


WRIA 15

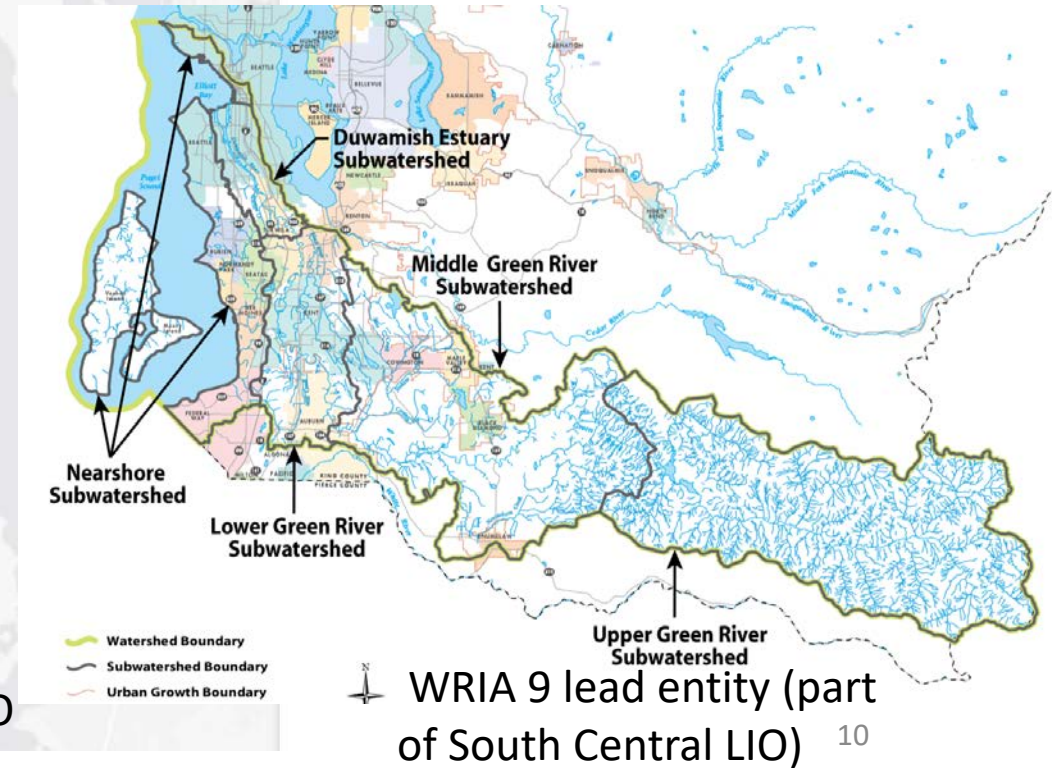
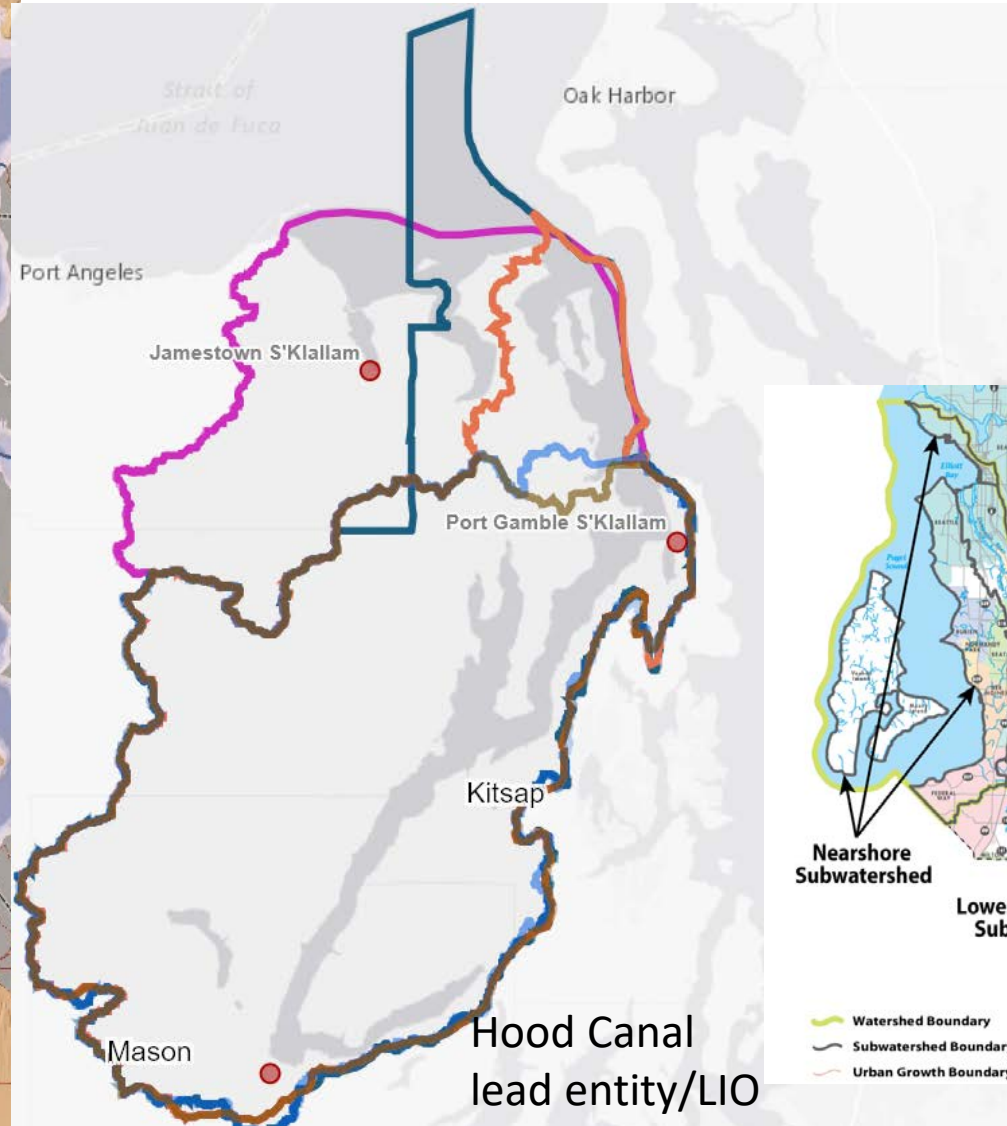


WRIA 9 Salmon Recovery Lead Entity

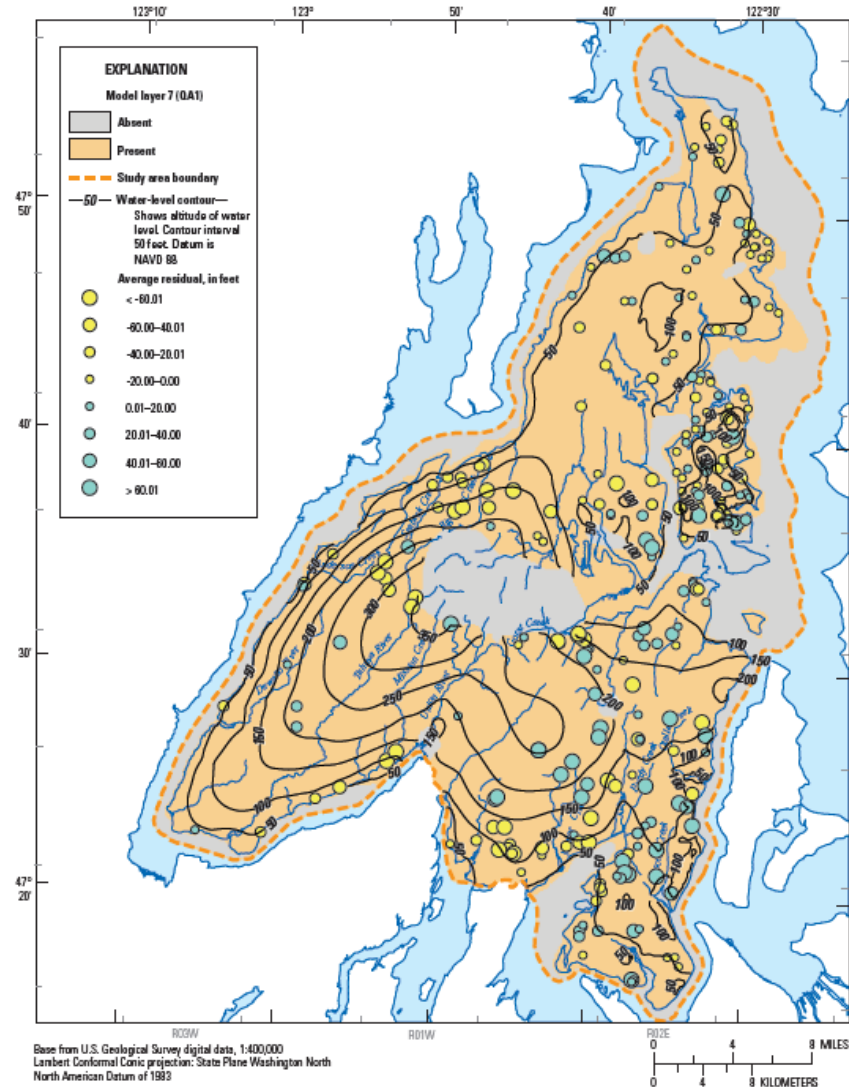
Geography Questions: Salmon Recovery, Local Integrating Organizations



Partners in Planning?

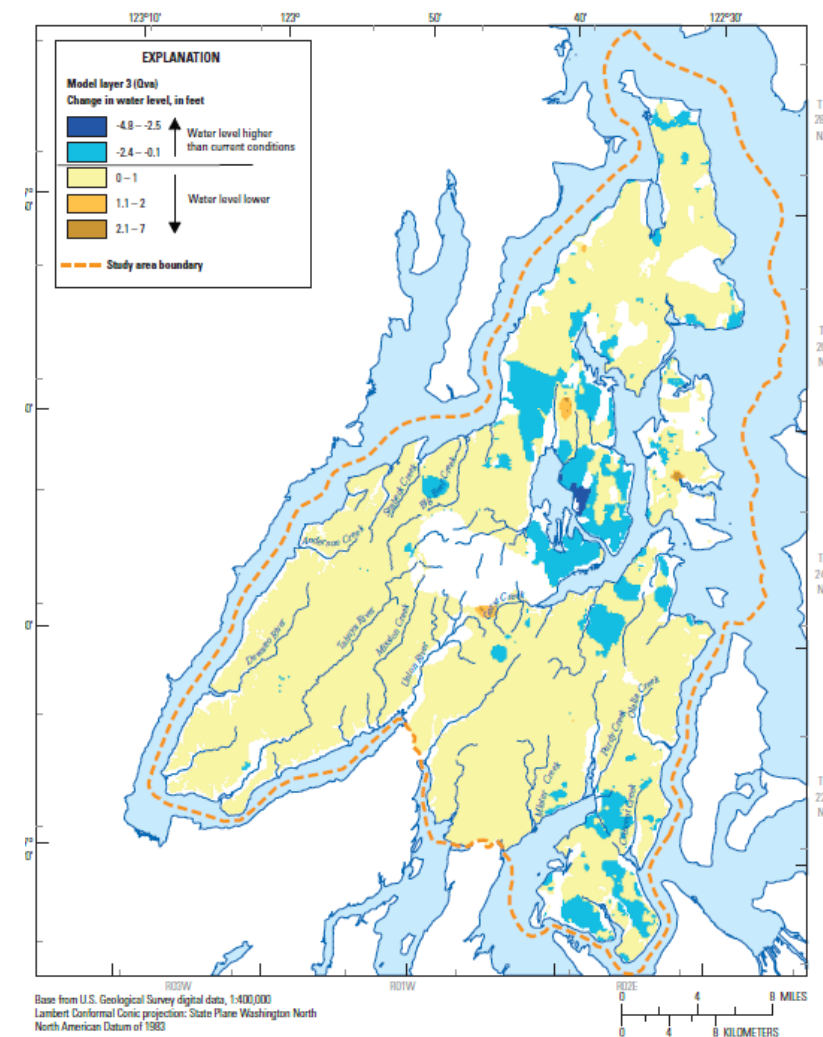


Data Availability and Needs: Kitsap Groundwater Model



C. Model layer 7—sea level aquifer (QA1).

USGS and Kitsap PUD, 2016



A. Model layer 3—Vashon advance aquifer (Qva).

Figure 14. Simulated water-level altitude changes between the current conditions simulation and increased pumpage simulation, west-central Washington.

Data Availability and Needs

What are other key sources of data that are available or needed for our task at hand?

- Dept of Health – water purveyors map
- KPUD data
- County and city data
- Tribal data
- Other?



Training Topic	Presenter	Timeline
Instream Flows 101	Ecology	Jan/Feb
Hydrogeology 101/Kitsap GW Model and Uncertainty	Ecology	Jan/Feb
Salmon Biology and Planning 101	WDFW/Lead Entity?	Spring 2019
WA Water Law 101	Ecology	Spring 2019
City and County Planning	City / County Reps	Winter/Spring 2019
Tribal Perspectives on Traditional Use?	Tribes	Spring 2019
Climate Change Overview	UW-CIG or Local Partners	Spring/Summer 2019
Water Rights Acquisitions	Ecology	Spring/Summer 2019
Net Ecological Benefit	Ecology	Summer 2019
Growth Forecasts/Projections	OFM	Spring 2019
Project Types (Water for Water and Non Water)	Participating Partners, Washington Water Trust	Spring/Summer 2019

Next Steps

- **Next meeting: January 14th at Poulsbo Library 10:30am**
- **Future meetings – move to 1st Thursday starting in February**
- **Finalize Operating Principles**
- **Training on Instream flows**
- **Workgroup Needs?**
 - **Data availability and needs**
 - **Subbasins**
- **Review timeline, planning requirements and options**
- **Briefing calls from the chair**