

Washington Water Supply Availability Committee
Hosted by Jeff Marti

Friday, Aug 9, 2019 10:00 am | 1 hour 30 minutes | (UTC-08:00)
Pacific Time (US & Canada)

Meeting number: 804 829 546

Password: DV4sr2Z5

Agenda: The Washington State Water Supply Availability
Committee (WSAC) meets periodically to monitor water supply
conditions and forecasts for Washington State.

<https://watech.webex.com/watech/j.php?MTID=meb034e8f4759c2986ad66cf6210f4848>

Join by video system

Dial 804829546@watech.webex.com

You can also dial 173.243.2.68 and enter your meeting number.

Join by phone

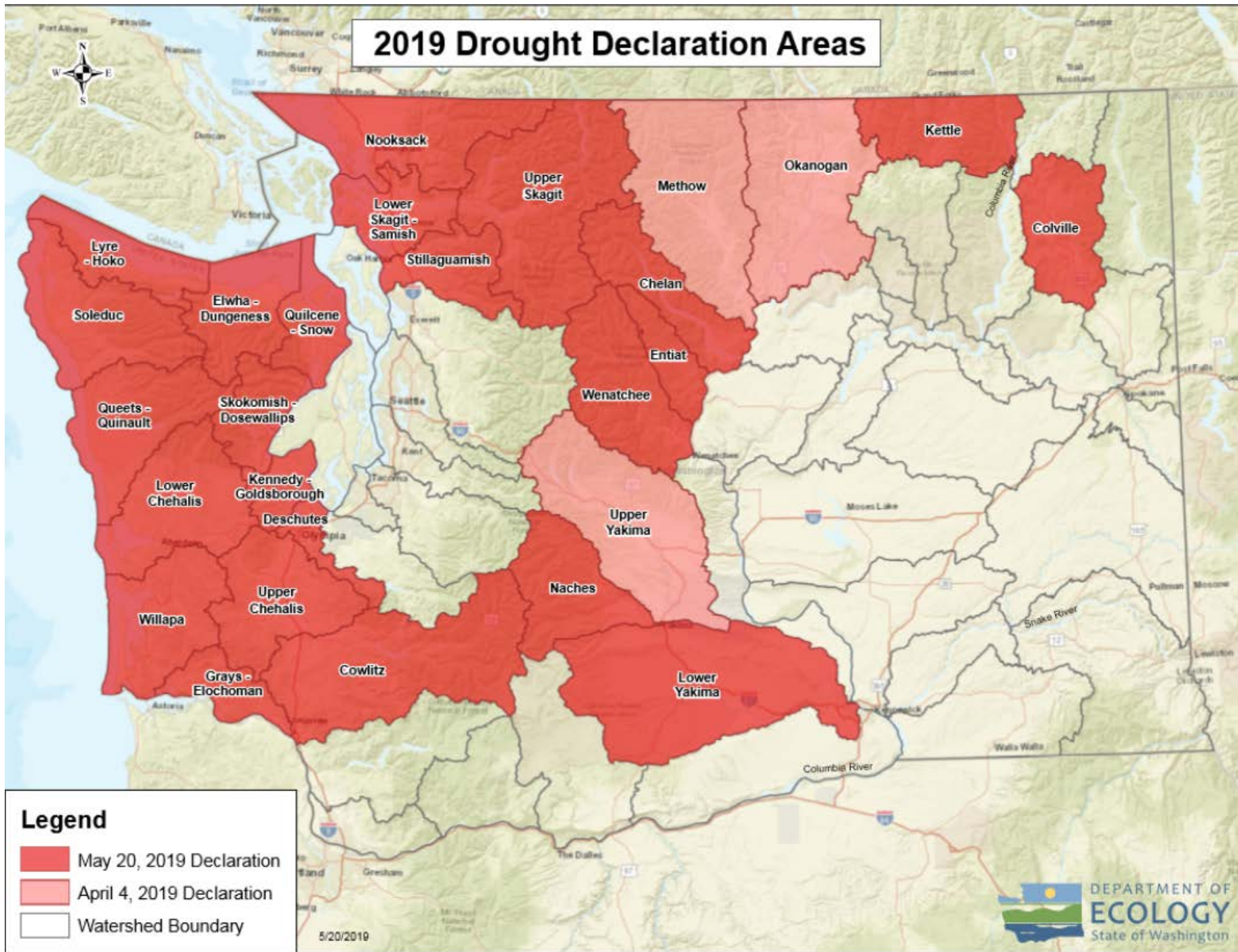
+1-415-655-0001 US Toll

Access code: 804 829 546

Water Supply Availability Meeting
+1-415-655-0001
Access code: 804 829 546

Time	Subject	Responsible	Representing
10:00 – 10:15	Welcome Drought Highlights: Permits, Curtailments and Grants	Jeff Marti	Ecology
10:15 – 10:35	Regional Climate Perspective 1. Recent precipitation and temperature 2. Seasonal forecasts/ENSO	Karin Bumbaco and Nick Bond	Office of Washington State Climatologist
10:25 – 10:40	Streamflow Observations	Rick Dinicola	USGS
10:40 – 10:50	Yakima Basin System Status	Chris Lynch	BOR
10:50 – 11:05	Input from Water Managers/State Agencies	All	
11:05 – 11:15	Recommendations for further Action	All	
11:15– 11:20	Key Upcoming Dates EWEC – August 13 th NEXT WSAC – THURSDAY, OCTOBER 17 th		

2019 Drought Declaration Areas



Drought Applications as of August 8th

Nooksack Basin	1
Okanogan Basin	1
Upper Yakima	1
Lower Yakima	4
Colville	1
TOTAL	8
Two More Pending Methow and Lower Yakima	

How does this compare?

2001 (Statewide Full Year) -- 169

2005 (Statewide Full Year) -- 119

2015 (Statewide Full Year) -- 71

Yakima Emergency Use Water
2015:

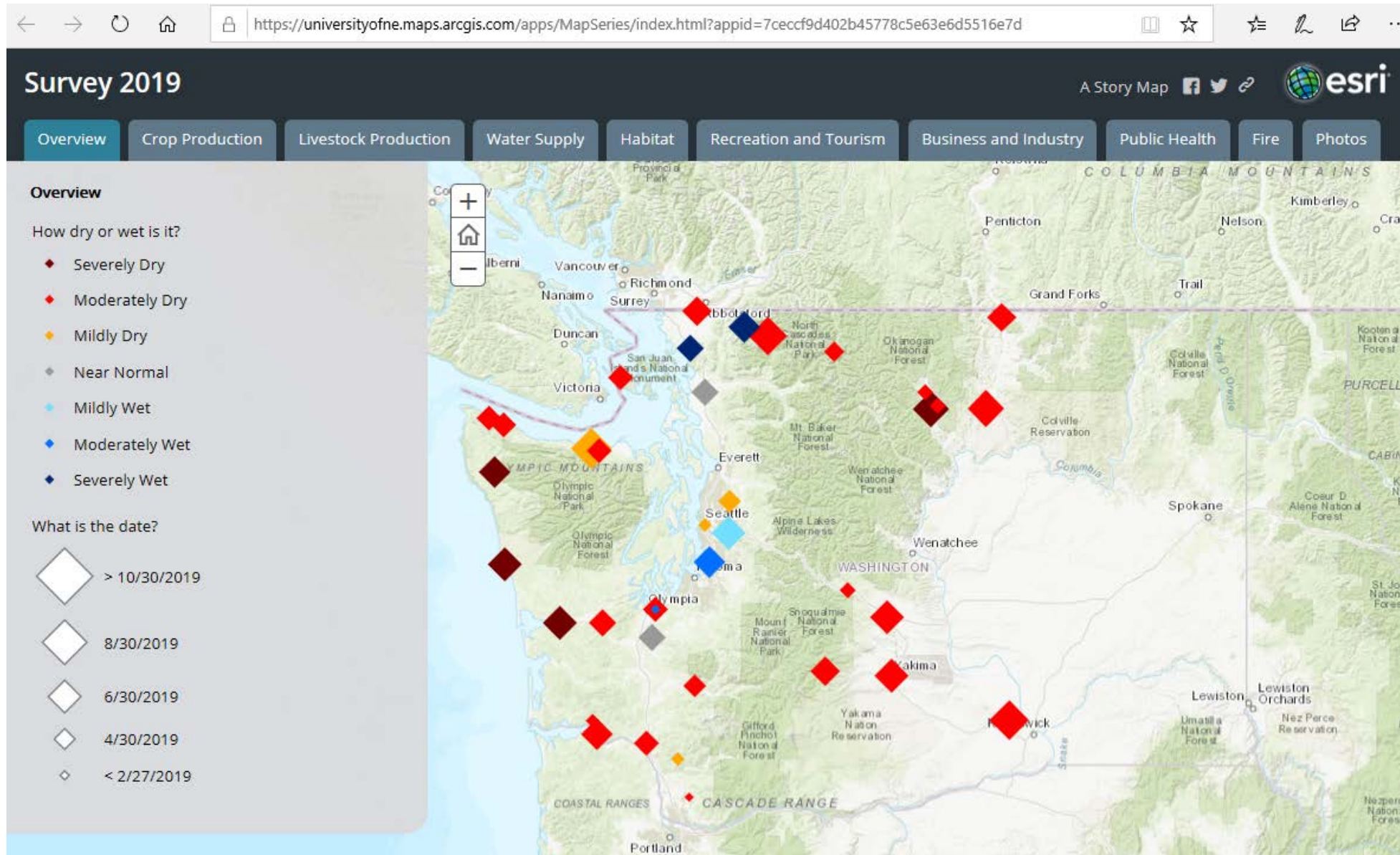
Emergency Grants

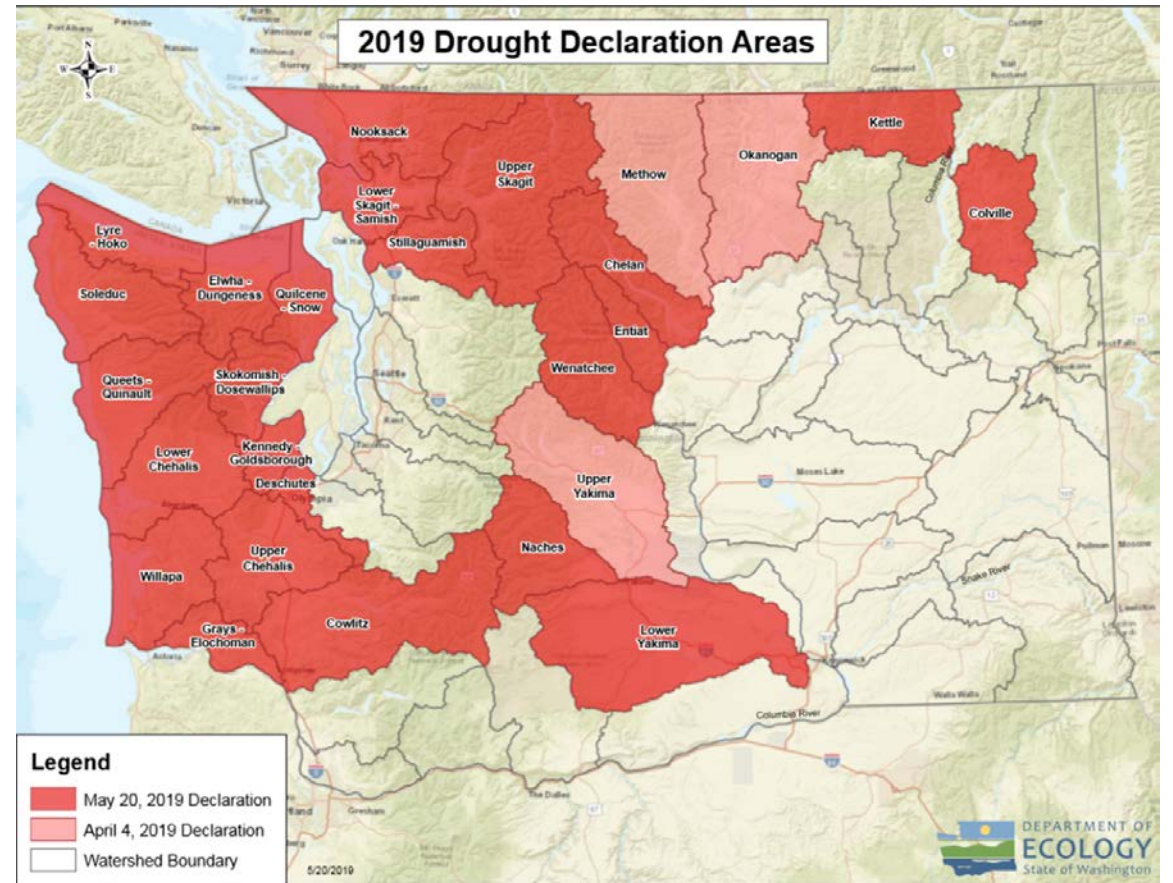
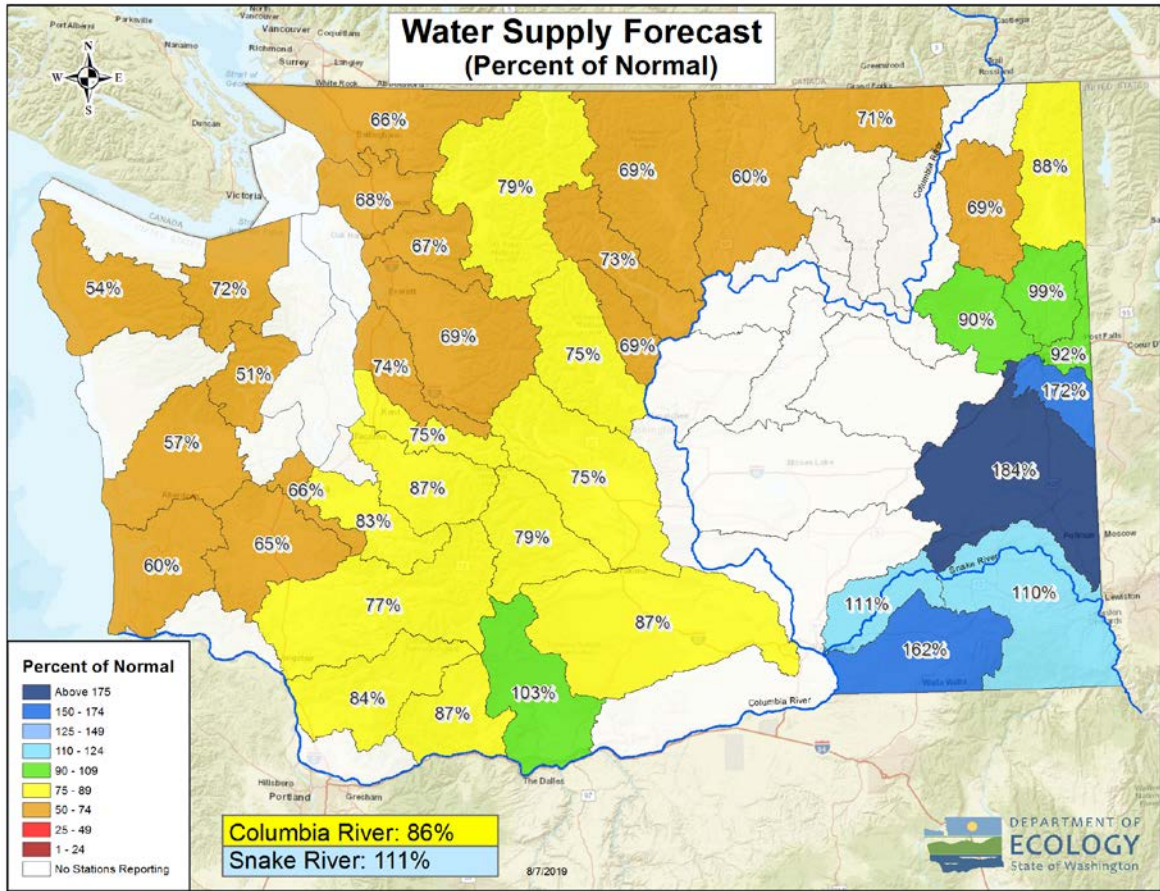
- About \$517K allocated so far.
 - Selah City of --Public Work -- The City of Selah's Well No. 7 static water level (pressure) has declined significantly in the past few years due to regional drought conditions. This decline has led to a loss of well production capacity and has impacted the City's ability to meet peak system demands. This project will involve cleaning the well and installing a protective liner and screen.
 - Jamestown S'Klallam Tribe -- Fish blockage surveying and maintaining habitat connectivity
 - Skagit County Public Utility District No. 1 -- Leak detection equipment
 - City of Forks -- Development of the Campbell Pitt well source for inclusion of the new source well into City's existing water system
 - City of Forks -- Water tanks to distribute emergency water to smaller water systems nearby

Curtailment of water rights to protect instream flow rules and senior water rights:

- Nooksack/Ten Mile Creek
Skagit
Chehalis
Okanogan/Similkameen
Methow
Wenatchee
Upper Yakima
Little Spokane
- Also: request for voluntary conservation for property owners around Lake Samish (~233), which feeds Friday Creek.

Drought Impact Reporter: <https://droughtreporter.unl.edu/submitreport/>





Apr – Sept Forecast Summaries.

WRIA_NM	April 3 fcst	May 19 fcst	Aug 7 fcst	May - Aug Diff
Cedar - Sammamish	79%	83%	74%	-9%
Chelan	76%	75%	73%	-2%
Columbia River	84%	87%	86%	-1%
Colville	101%	66%	69%	3%
Cowlitz	86%	84%	77%	-6%
Deschutes	78%	67%	66%	-1%
Duwamish - Green	76%	82%	75%	-6%
Elwha - Dungeness	72%	72%	72%	0%
Entiat	74%	70%	69%	-1%
Hangman	150%	172%	172%	0%
Kettle	77%	74%	71%	-3%
Klickitat	97%	104%	103%	-1%
Lewis	87%	87%	84%	-3%
Little Spokane	116%	107%	99%	-8%
Lower Chehalis	84%	64%	57%	-7%
Lower Skagit - Samish	78%	73%	68%	-4%
Lower Spokane	90%	95%	90%	-5%
Lower Yakima	92%	87%	87%	0%
Methow	72%	71%	69%	-2%
Middle Snake	97%	110%	110%	-1%
Middle Spokane	87%	95%	92%	-3%
Naches	85%	80%	79%	0%
Nisqually	90%	88%	83%	-5%
Nooksack	77%	72%	66%	-6%
Okanogan	61%	63%	60%	-3%
Palouse	118%	181%	184%	3%
Pend Oreille	84%	99%	88%	-11%
Puyallup - White	90%	95%	87%	-8%
Skokomish - Dosewallips	76%	62%	51%	-11%
Snake	97%	114%	111%	-3%
Snake River	98%	114%	111%	-3%
Snohomish	78%	73%	69%	-4%
Soleduc	83%	62%	54%	-8%
Stillaguamish	81%	70%	67%	-3%
Upper Chehalis	86%	66%	65%	0%
Upper Skagit	79%	80%	79%	-1%
Upper Yakima	74%	77%	75%	-2%
Walla Walla	124%	182%	162%	-20%
Wenatchee	81%	84%	75%	-9%
Willapa	85%	64%	60%	-5%
Wind - White Salmon	85%	89%	87%	-2%

Seasonal Forecast Ranks, in DESC Order (1 = Driest)

