

# **Kittitas County Water Conservancy Board**

**PO Box 605  
Ellensburg, Washington 98926  
509 899 5707**

---

August 27, 2020

Washington State Department of Ecology  
1250 West Alder Street  
Union Gap, WA 98903

New application—Our number: KITT-20-01, Wallace Ranch II LLC

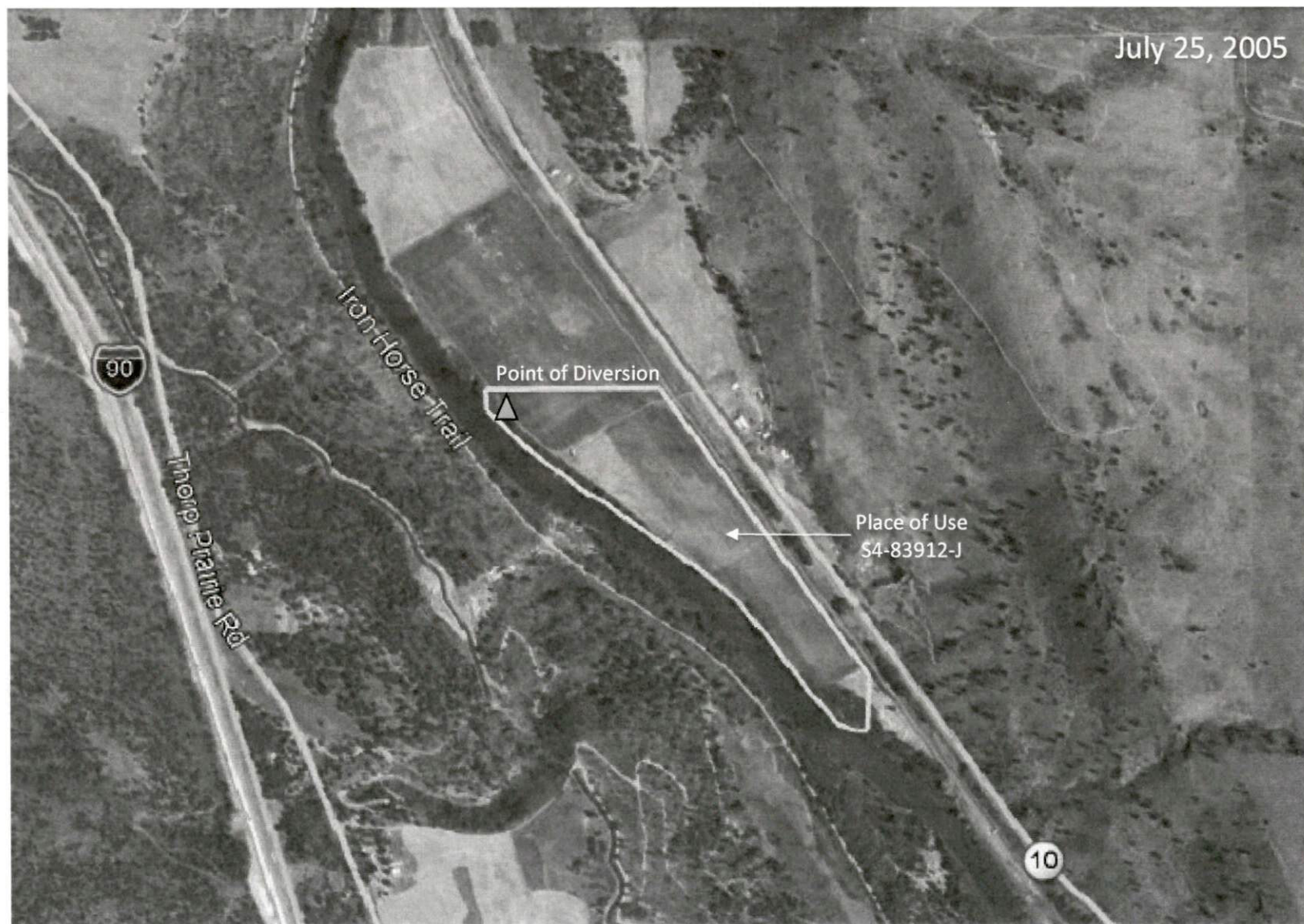
To Whom It May Concern:

Enclosed you will find an original Application for Change/Transfer of Water Right for Wallace Ranch II LLC for filing. The board at its August 18, 2020 meeting accepted this application. Please contact me with any questions you may have.

Sincerely,

A handwritten signature in blue ink, appearing to read "Chery Byers", with a stylized flourish at the end.

Chery Byers  
Clerk of the Board



**Figure 1E**  
**July 2005 Aerial Photo**

**Aspect Consulting**

8/14/2020

L:\Projects\Wallace Ranch\Application\change application\Aerials2005.xlsx

Wallace Ranch  
Project No. 190280





**Figure 1D**  
**June 2009 Aerial Photo**

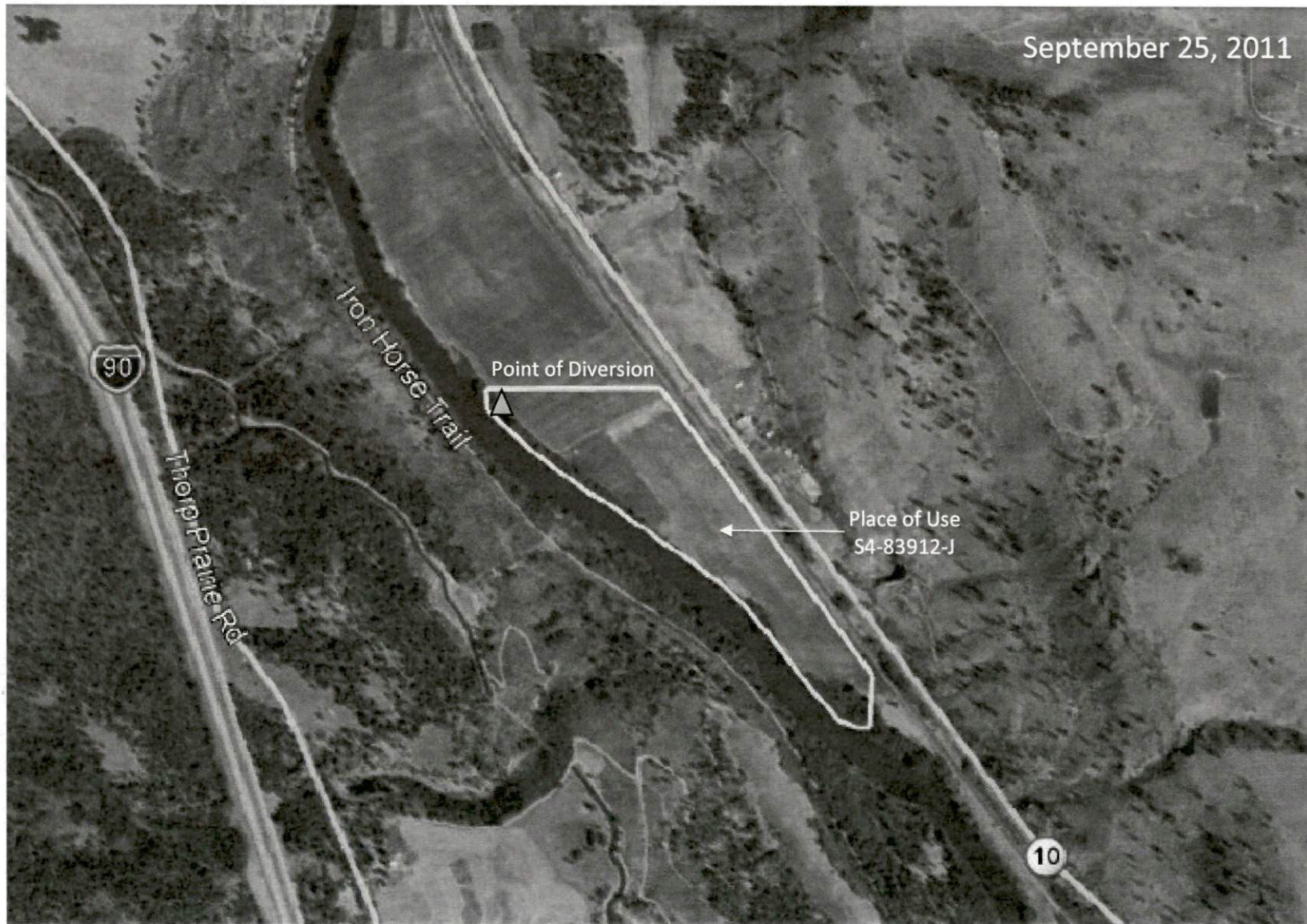
Aspect Consulting

8/14/2020

L:\Projects\Wallace Ranch\Application\change application\Aerials2009.xlsx

Wallace Ranch  
Project No. 190280





Aspect Consulting

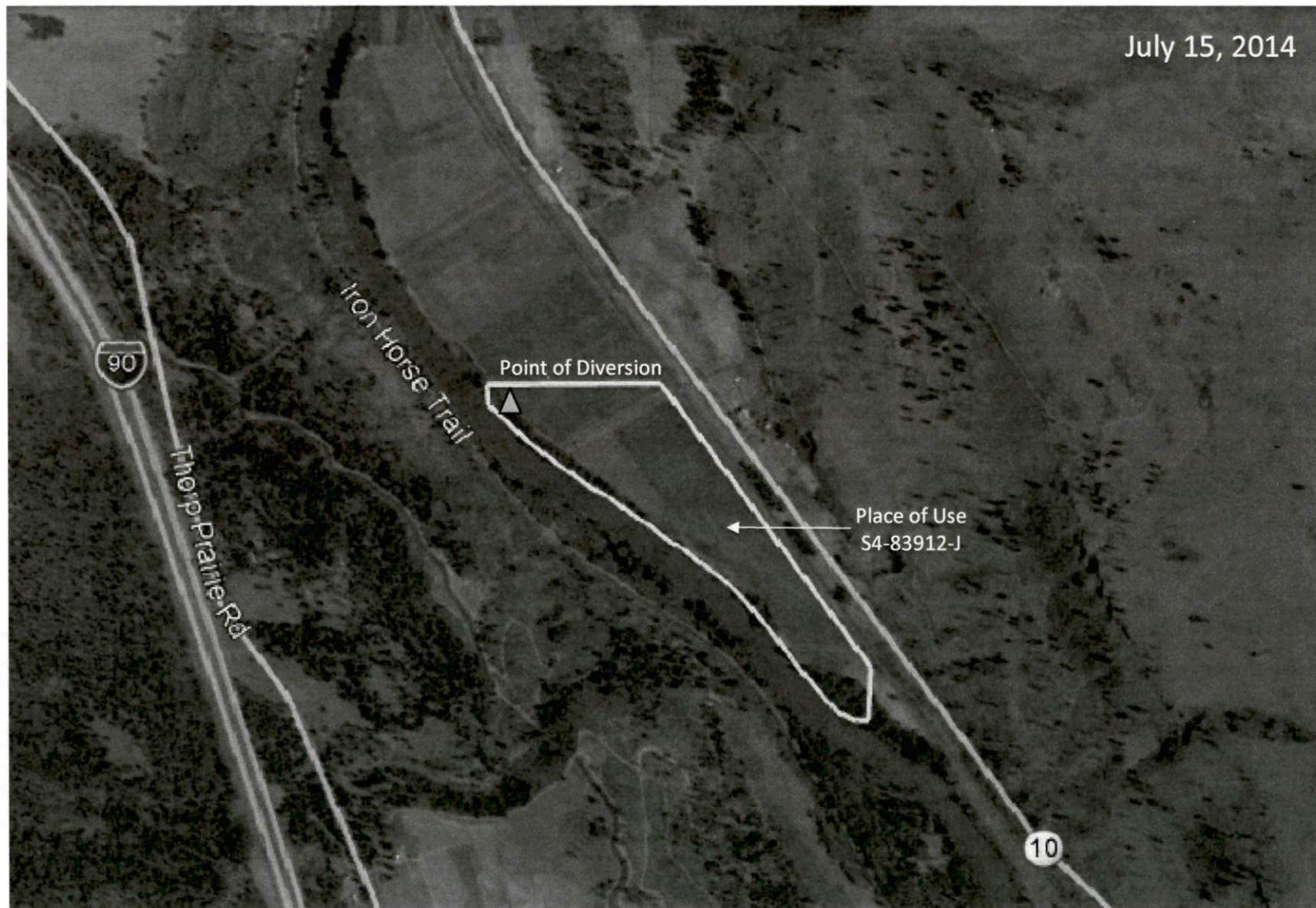
8/14/2020

L:\Projects\Wallace Ranch\Application\change application\Aerials2011.xlsx

**Figure 1C**  
**September 2011 Aerial Photo**

Wallace Ranch  
Project No. 190280





**Figure 1B**  
**July 2014 Aerial Photo**

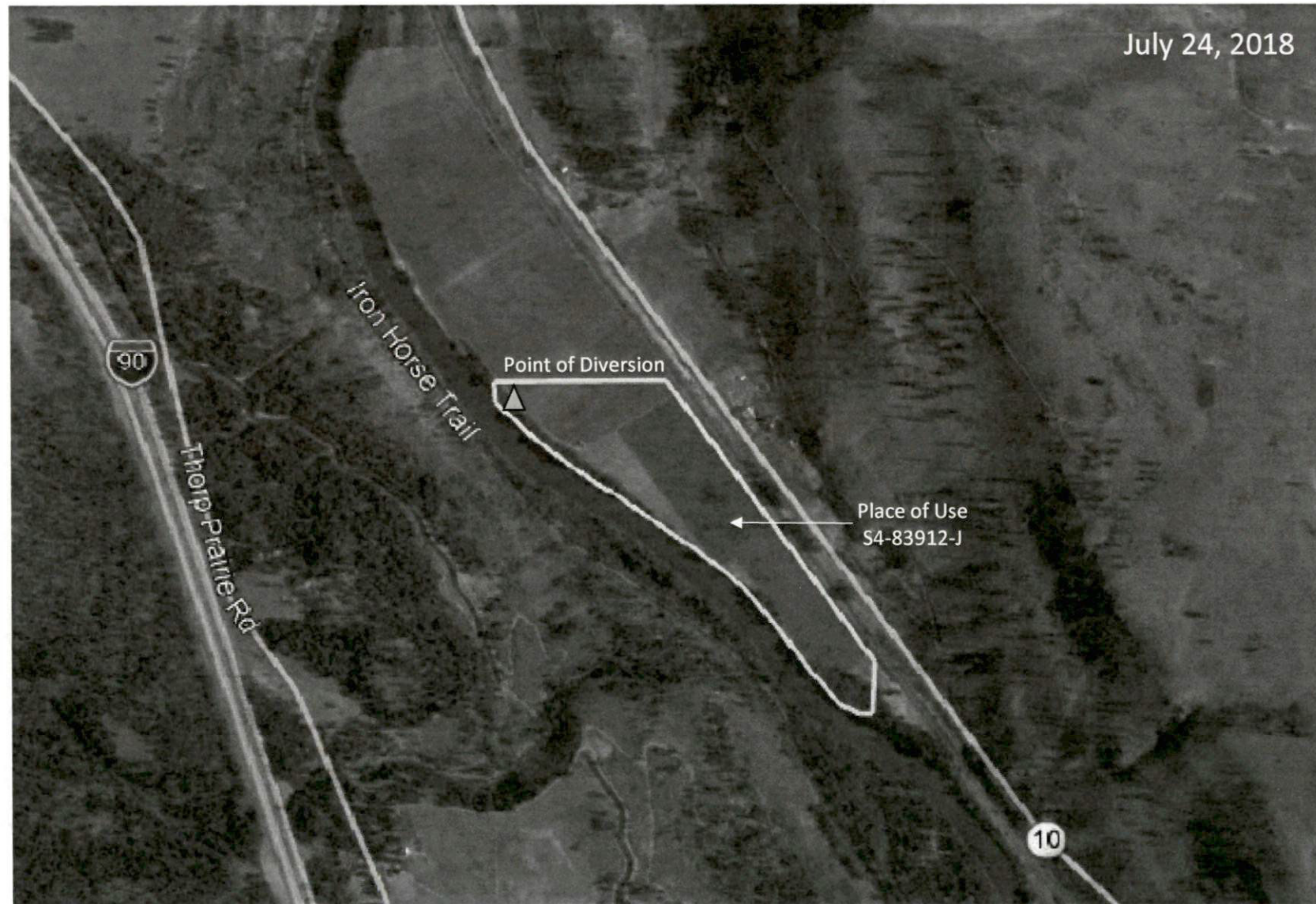
Aspect Consulting

8/14/2020

L:\Projects\Wallace Ranch\Application\change application\Aerials2014.xlsx

Wallace Ranch  
Project No. 190280





**Figure 1A**  
**July 2018 Aerial Photo**

Aspect Consulting

8/14/2020

L:\Projects\Wallace Ranch\Application\change application\Aerials2018.xlsx

Wallace Ranch  
Project No. 190280

CLAIMANT NAME: **Wallace Ranch Limited Partnership** COURT CLAIM NO. 02267

Certificate Number: S4-83912-J

Subbasin: 04 Swauk Creek

Source: Yakima River

Use: Irrigation of 38.2 acres

Period of Use: April 15 through October 1

Quantity: 3.35 cubic feet per second; 279.6 acre-feet per year

Priority Date: **September 24, 1894**

Point of Diversion: 200 feet south and 200 feet east of the north quarter corner of Section 14, being within the NW $\frac{1}{4}$ NE $\frac{1}{4}$  of Section 14, T. 19 N., R. 16 E.W.M.

Place of Use: That portion of the NE $\frac{1}{4}$  of Section 14, T. 19 N., R. 16 E.W.M. lying between the railroad and the Yakima River.

Limitations Of Use: The instantaneous quantity under both the 1884 and 1894 rights to Yakima River water is limited to no more than 3.35 cubic feet per second.